

Prepared by: Abie C. Davis, P.E. & L.S., 1428 Oregon St., Knoxville, Iowa 50138 Phone: (515) 842-5863

UNITED STATES PUBLIC LAND SURVEY CORNER CERTIFICATE

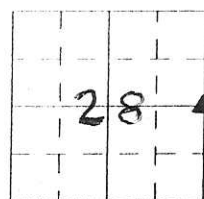
SLS19-94

Land survey Monuments situated in Section 28, Township 75N, Range 18W, of the Fifth Principal Meridian, Mason County, Iowa.

Previously recorded in N/A in County Recorders Office.

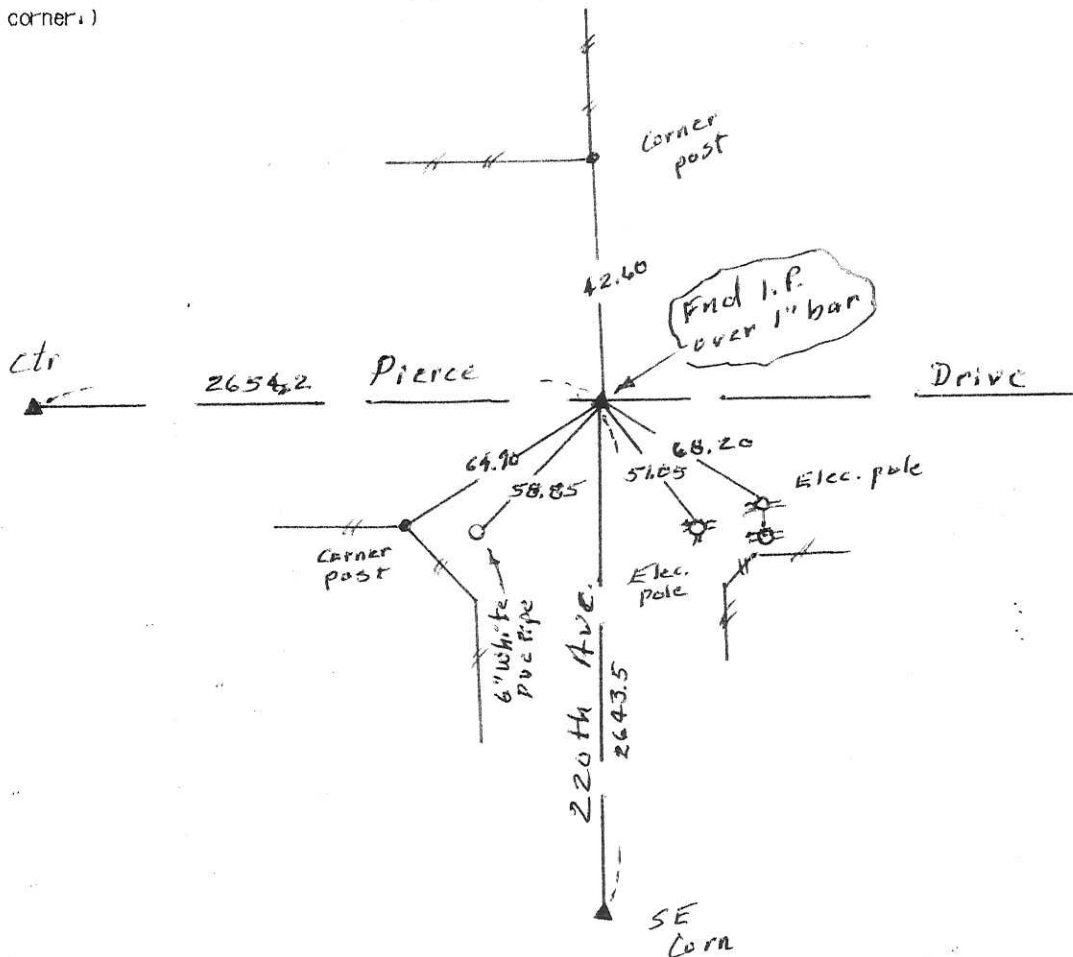
Show reason for preparing this certificate, the evidence and detailed procedures used in establishing the corner positions and monumentation found or placed

Monument Description and Remarks: Found Iron Pin over 1" iron bar.



PLAN - VIEW

(Show a minimum of three reference ties to durable physical objects, relevant monuments and physical conditions that will enable recovery of the corner.)



I hereby certify that the survey work was completed and this land surveying document was prepared by me or under my direct personal supervision and that I am a duly licensed land surveyor under the laws of the state of Iowa

Signature: Abie C. Davis

Abie C. Davis, P.E. & L.S.

Date: 7/11/16 Reg. No. 5594

My license renewal date is December 31, 2017

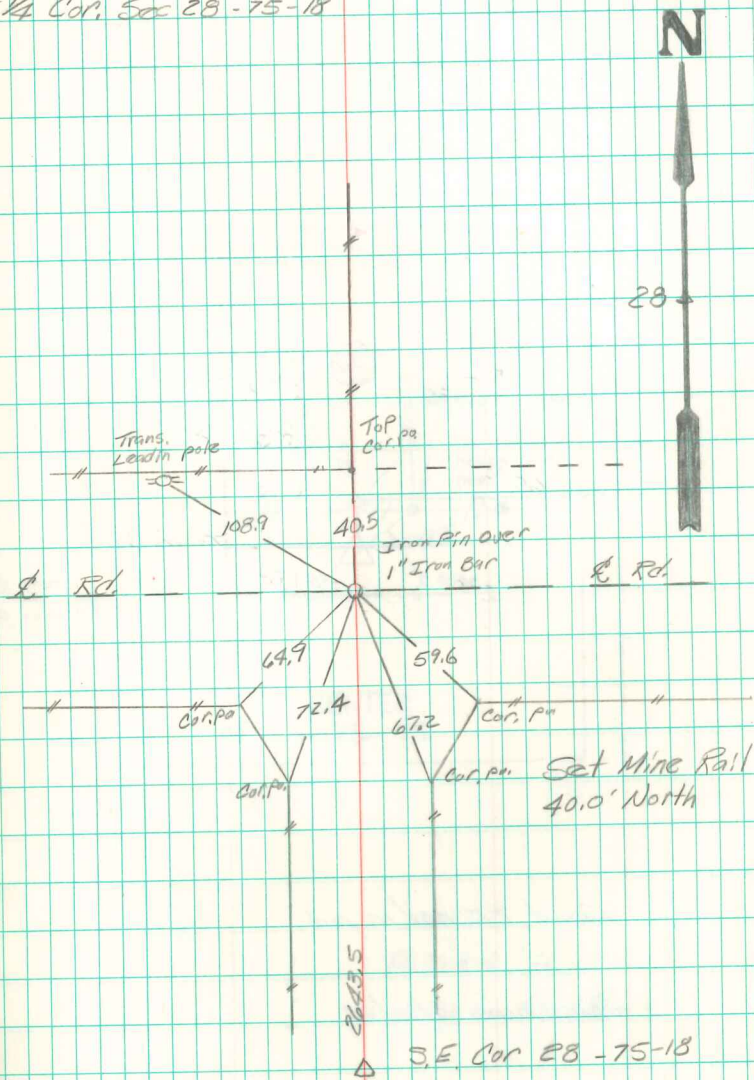
List Corners to be Indexed			
Corners	Section	Twp	Range
E4	28	75N	18W

SEAL



Set 1" Iron Bar 2643.5' from S.E.
Cor. Sec. 28. This dist. being given
in old records as distance from S.E.
Cor. 28 to E 1/4 Cor. 28. Set Iron bar
in line with fence north.

E 1/4 Cor. Sec 28 - 75-18



Revised 7/23/92
Abie Davis