

NAOMI ELLIS, RECORDER
MARION COUNTY IOWA

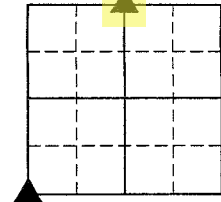


GARDEN & ASSOC. P.O. Box 451, Oskaloosa, Iowa 52577-0451 Phone: (641)672-2526

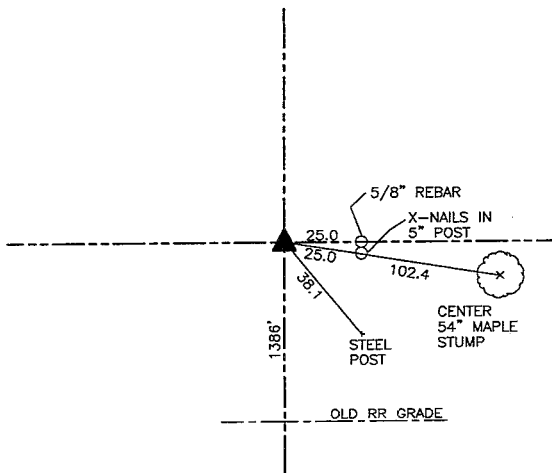
UNITED STATES PUBLIC LAND SURVEY CORNER CERTIFICATE
OF

Land Survey Monuments situated in Section 2, Township 75, Range 18, of the Fifth Principal Meridian, MARION County, Iowa.
Previously recorded in N/A in County Recorder's Office.
Monument Description and Remarks: _____

NO CERTIFICATE OF RECORD.



SW CORNER

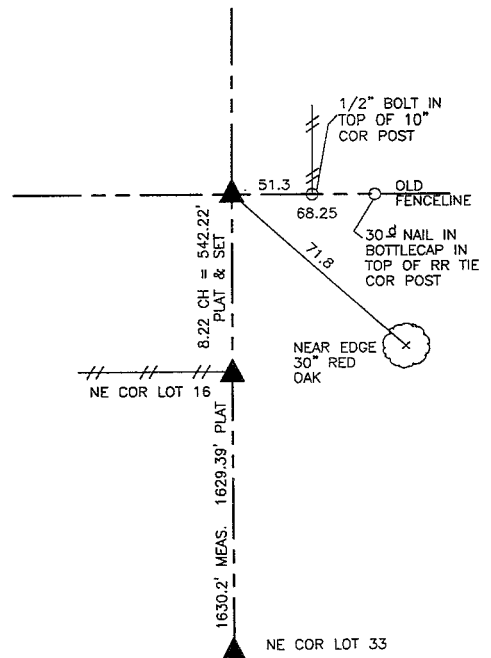


MAY 17 1999
FD WPA CONC. MON 20" DEEP WITH DISLODGED
3/4" x 12" REBAR ABOVE C.M. SET 5/8" x 30"
REBAR ON SOUTH AND WEST SIDES OF C.M.
SET 3/4" x 12" REBAR 8" DEEP ABOVE C.M.

AUGUST 2006 PLS 7995
FOUND 3/4" IRON PIN ABOVE CONC. MON.

JANUARY 2016 PLS 22232
FOUND 3/4" REBAR YPC 14416

N 1/4 CORNER



AUG. 10, 1999
RECORDED STONE HAS BEEN DESTROYED BY EXCAVATION.
ESTABLISHED CORNER BY LINE AND DISTANCE FROM NE COR
LOT 16 AND NE COR LOT 33. THIS LOCATION ALSO MATCHES
OLD FENCELINE ALIGNMENT SOUTH FROM NE COR LOT 16 AND
OLD FENCELINE EAST OF N 1/4 CORNER OF NORTH LINE
SECTION 2.

SET 5" X 8" X 12" LIMESTONE 8" DEEP OVER 3/4" X 24"
PIPE. SET 5/8" X 30" REBAR ON WEST SIDE OF LIMESTONE.

JULY 11, 2023
FOUND LIMESTONE AS NOTED

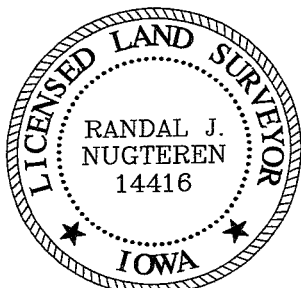
I hereby certify that this land surveying document was prepared and the related survey work was performed by me or under my direct personal supervision and that I am a duly licensed Land Surveyor under the laws of the State of Iowa.

Randal J. Nugteren September 26, 2023
Randal J. Nugteren, L.L.S. Date

License number: 14416

My license renewal date is December 31, 2024

SEAL



List Corners to be Indexed			
Corners	Section	Township	Range
SW COR	2	75	18
N 1/4 COR	2	75	18

PLAT 16-04 Garden & Assoc. ENV.