

KAREN SCHWANEBECK, RECORDER  
MARION COUNTY IOWA

Prepared by: Abie C. Davis, P.E. & L.S., 1428 Oregon St., Knoxville, Iowa 50138 Phone: (515) 842-5863

# UNITED STATES PUBLIC LAND SURVEY CORNER CERTIFICATE

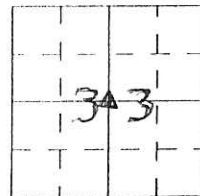
SLS19-94

Land survey Monuments situated in Section 33, Township 75N, Range 18W, of the Fifth Principal Meridian, Marion County, Iowa.

Previously recorded in N/A in County Recorders Office.

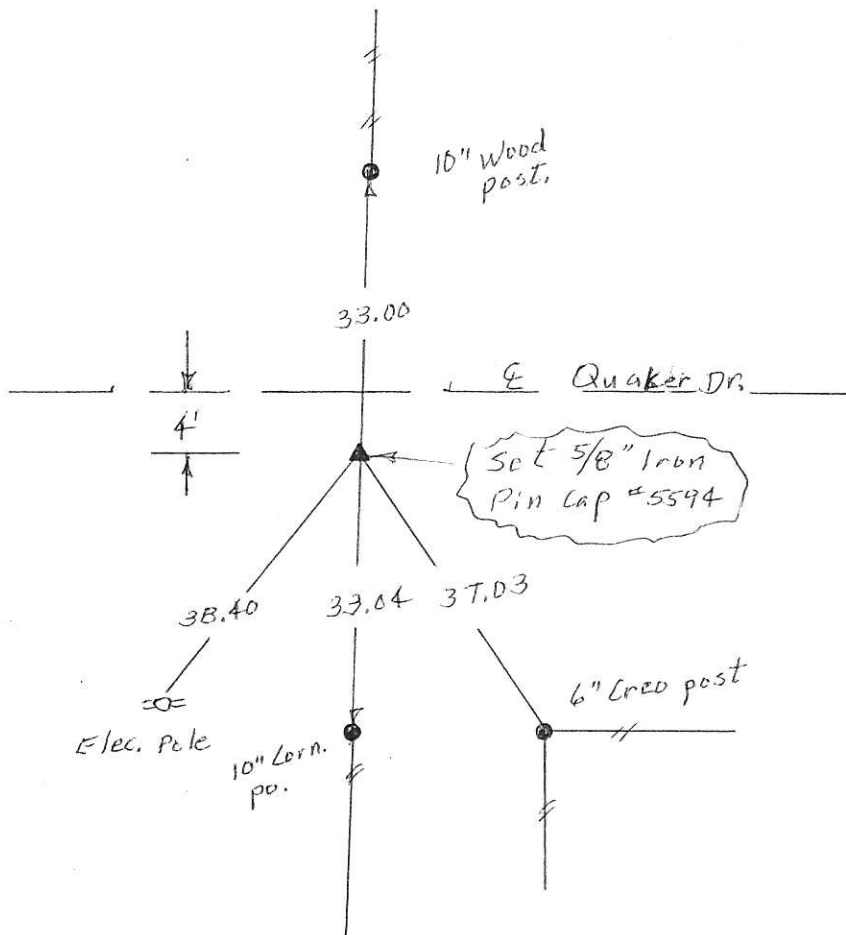
Show reason for preparing this certificate, the evidence and detailed procedures used in establishing the corner positions and monumentation found or placed

Monument Description and Remarks: Set corner in line with fence N. & fence So. and at mid-point between corner posts.



## PLAN - VIEW

(Show a minimum of three reference ties to durable physical objects, relevant monuments and physical conditions that will enable recovery of the corner.)



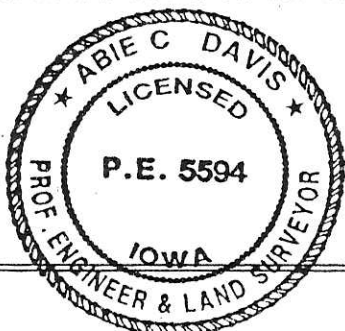
I hereby certify that the survey work was completed and this land surveying document was prepared by me or under my direct personal supervision and that I am a duly licensed land surveyor under the laws of the state of Iowa

Signature: Abie C Davis  
Abie C. Davis, P.E. & L.S.

Date: 8/9/16 Reg. No. 5594

My license renewal date is December 31, 2017

SEAL



List Corners to be Indexed  
Corners Section Twp Range

ctr. 33 75N 18W

Pay \$7.00 Cash - Ret Abie Davis