

KAREN SCHWANEBECK, RECORDER
MARION COUNTY IOWA

Prepared by: Abie C. Davis, P.E. & L.S., 1428 Oregon St., Knoxville, Iowa 50138 Phone: (515) 842-5863

UNITED STATES PUBLIC LAND SURVEY CORNER CERTIFICATE

SLS19-94

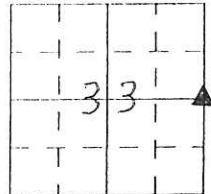
OF

Land survey Monuments situated in Section 33, Township 75 N, Range 18 W, of the Fifth Principal Meridian, Marion County, Iowa.

Previously recorded in N/A in County Recorders Office.

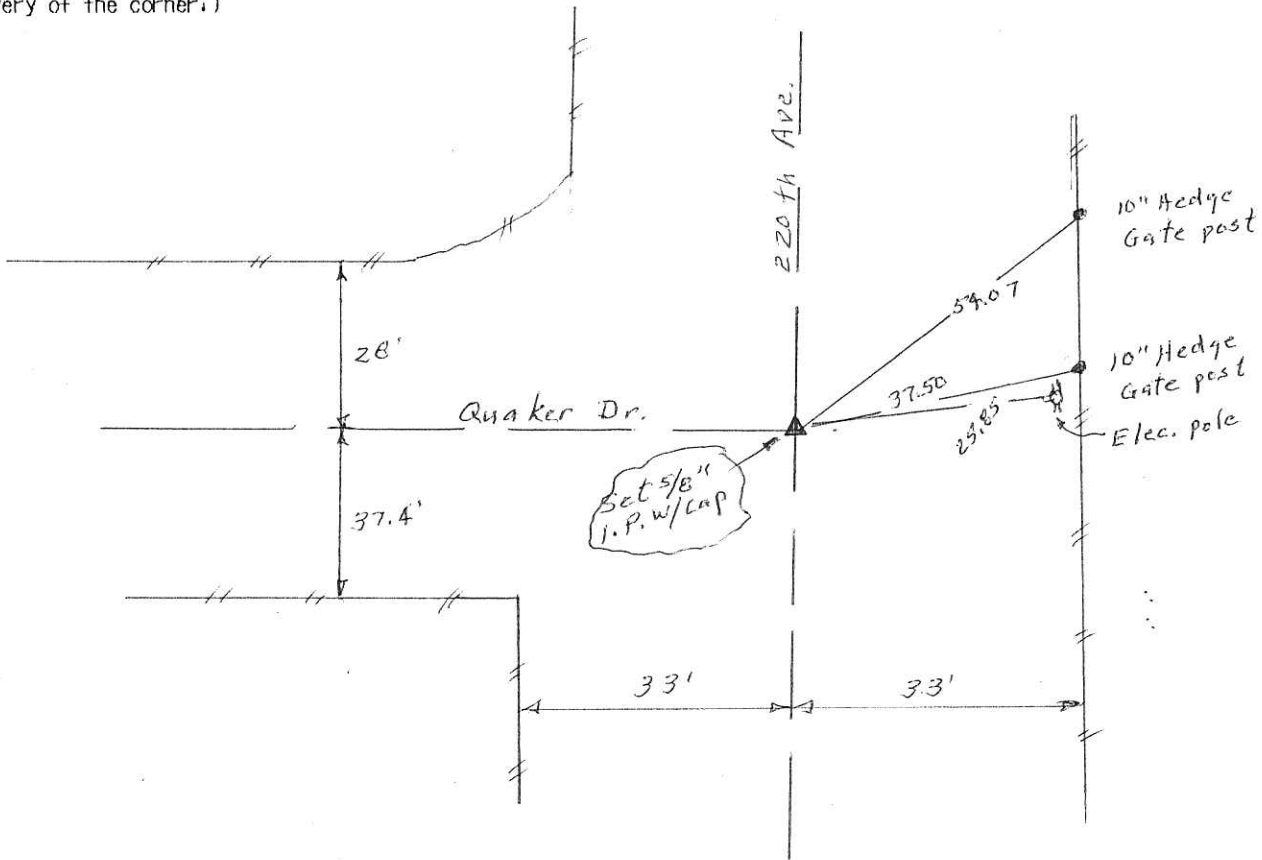
Show reason for preparing this certificate, the evidence and detailed procedures used in establishing the corner positions and monumentation found or placed

Monument Description and Remarks: Did not find the wood hub set over sandstone in 1953. Set 5/8" Iron Pin w/cap #5594 from ties made in 1953 and set out new ties



PLAN - VIEW

(Show a minimum of three reference ties to durable physical objects, relevant monuments and physical conditions that will enable recovery of the corner.)



I hereby certify that the survey work was completed and this land surveying document was prepared by me or under my direct personal supervision and that I am a duly licensed land surveyor under the laws of the state of Iowa

Signature: Abie C Davis

Abie C. Davis, P.E. & L.S.

Date: 8/9/16 Reg. No. 5594

My license renewal date is December 31, 2017

SEAL



List Corners to be Indexed			
Corners	Section	Twp	Range
E4	33	75N	18 W

Pd \$1700 Cash - Ret Abie Davis

Found Sand stone 24" x 15" x 4" standing
 on end directly in line with old fence
 East and exact split of road fences
 South,

Fence east moved 12" north
 because of ditch undermining old fence.

EVA Cor. 33-75-18

Nov. 4, 1953

By Vinson, Moll, Randol

