

Found 2-3"  $\phi$  file concrete filled

Set C.M. over 2-3" file Horiz. N. & S.

N.E. Cor. 33-75-18

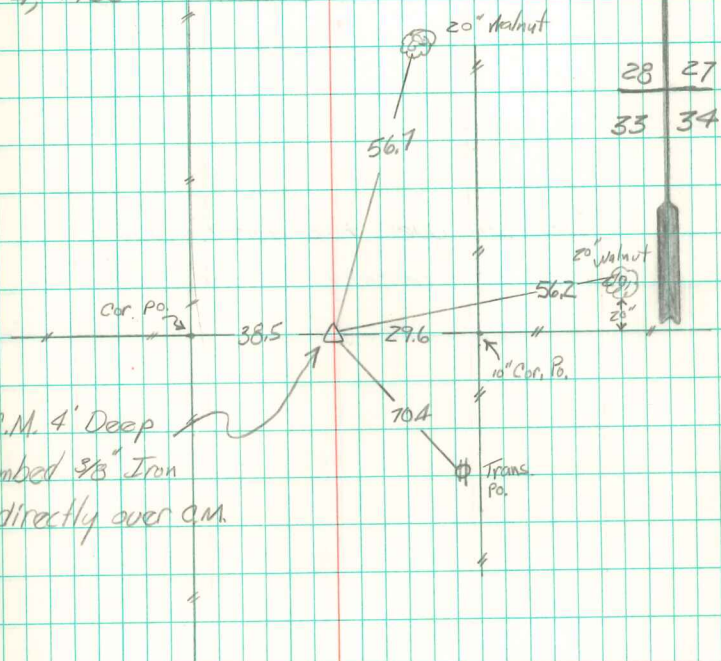
Set: 8-9-39

Dr. Thomas

Notes: Mignall

Found & Retied

Nov. 4, 1953



C.M. 4' Deep  
plumbed  $\frac{9}{16}$ " Iron  
pin directly over C.M.