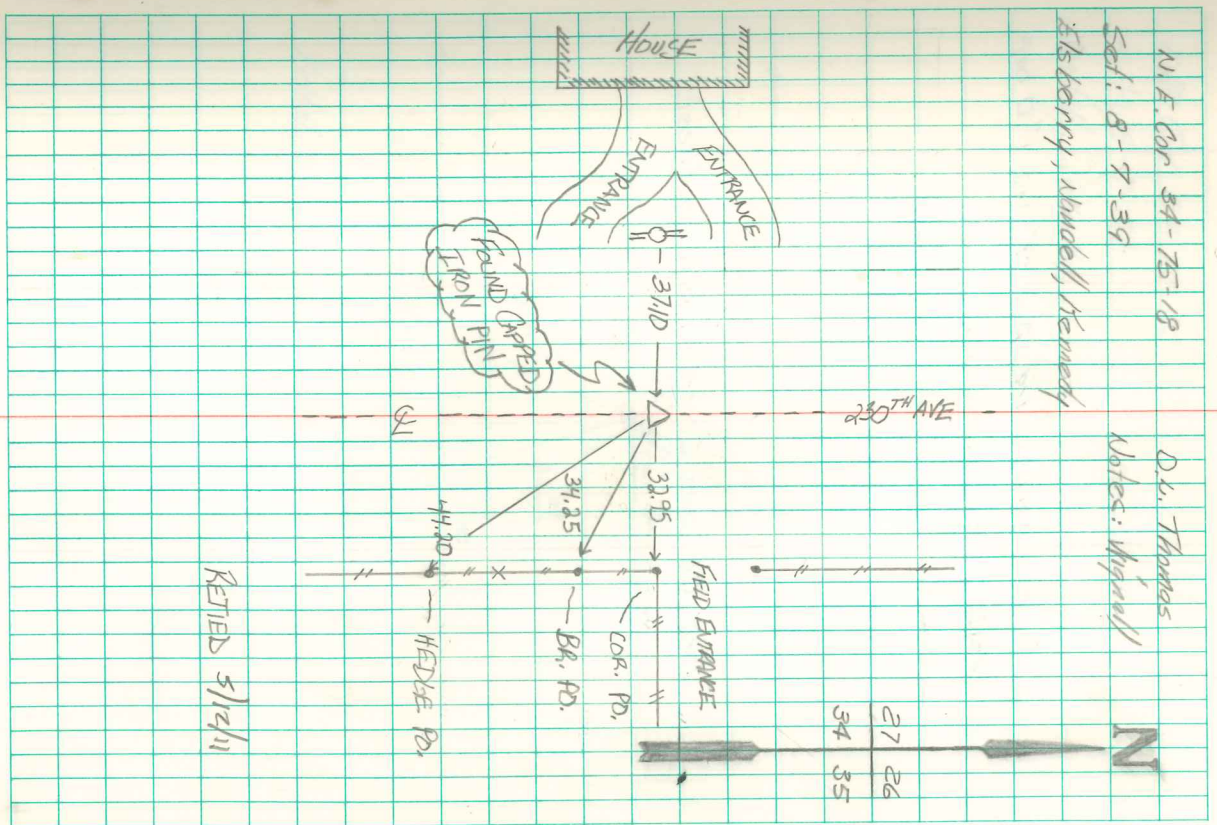


Found lime Stone 16" x 12" x 5" and  
 2-2" Ø tile broken (1-tile in P. Row  
 on surface).

Set RM, over 2-2" tile Horiz. N<sup>o</sup> 51  
 Stone on east side

N. E. Cor 34-75-18  
 Set: 8-7-39  
 Skerry, Muddell, Kennedy

D.L. Thomas  
 Notes: Muddell



RETIRED 5/12/11