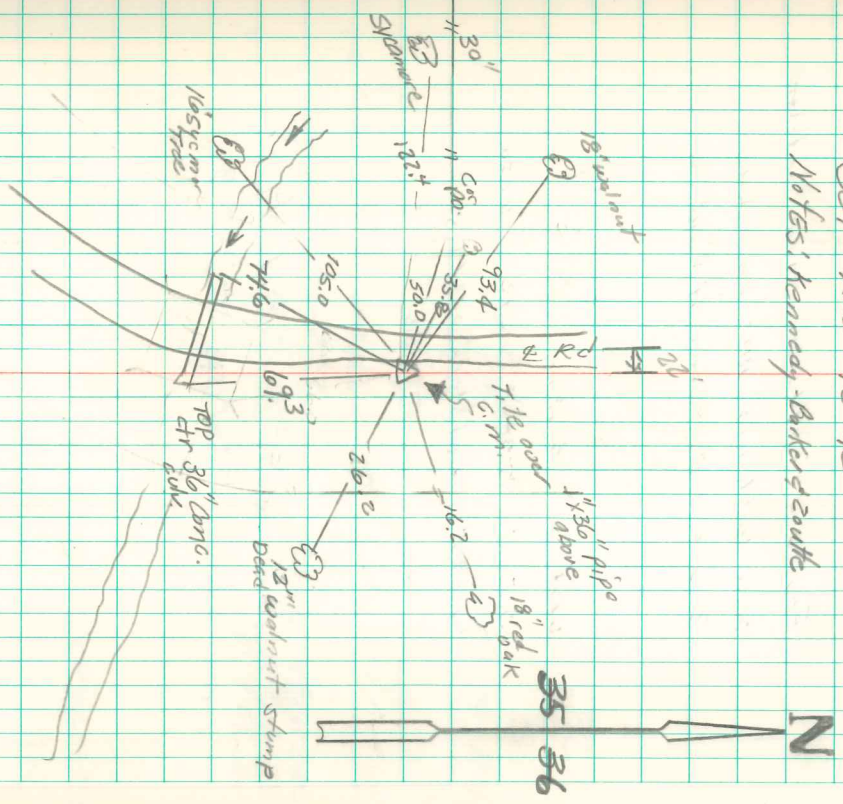


Found Burr oak Bearing Tree Marked
 by N. Watkins in 1881, 33" in Dia.
 Found 2-2" Pipe in vertical Position
 of True Corner.

Lowered 1-2" pipe in place,
 Set c.m. over same marked ~~35~~ 36
 Placed 12" x 16" Top c.m.

- 35.8' E. 5° S. in 33" Burr oak Tree
- 105.0' N.E. of 16" Sycamore Tree
- 26.2' N.E. " 15" Walnut "
- 93.4' S.E. " 18" " "
- 50.0' E. of 6" oak Cor Post to E. N.E.W.
- 69.0' N.E. of N.W. Guard rail R. of Br.
- 66.0' N.E. " N.E. " " R. " "
- 9.0' West of Lincoln N. on E. side Rd
- 36.0' East " " " on W. " "

E¹/₄ Cor Dec 35-75-18
 Set - Nov - 13-42
 Notes: Kennedy - Barker & Zouke



Rehad 7/24/92 Alvin Davis