

Found Sand Stone 25" x 19" x 7" and
3-2" ϕ tile

Set C.M. over 3-2" ϕ tile Horiz N+S,
Stone on N. side.

N. E. Cor. Ed-75-18

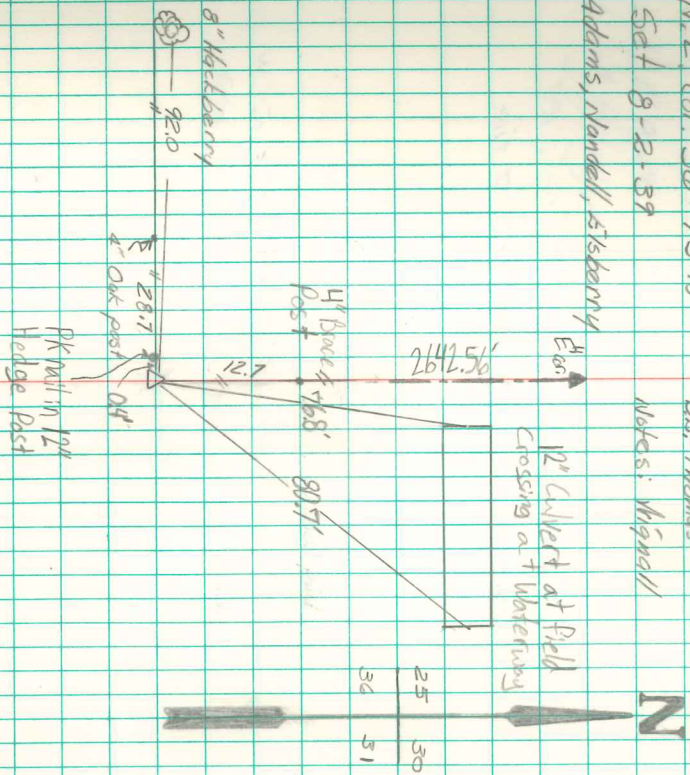
Set 9-2-39

Adams, Nardell, 51stberry

D.L. Thomas

Notes: Wignall

12" Culvert at Field
Crossing at Waverly



Notes: Found WPA mon. 18" deep on E. side

ϕ 12" Hedge Post.

Set 5/8" x 36" Rebar beside C.M.

Set 5/8" x 15" Rebar above C.M.

Ret'd 4/26/06
Kandal Nugteren