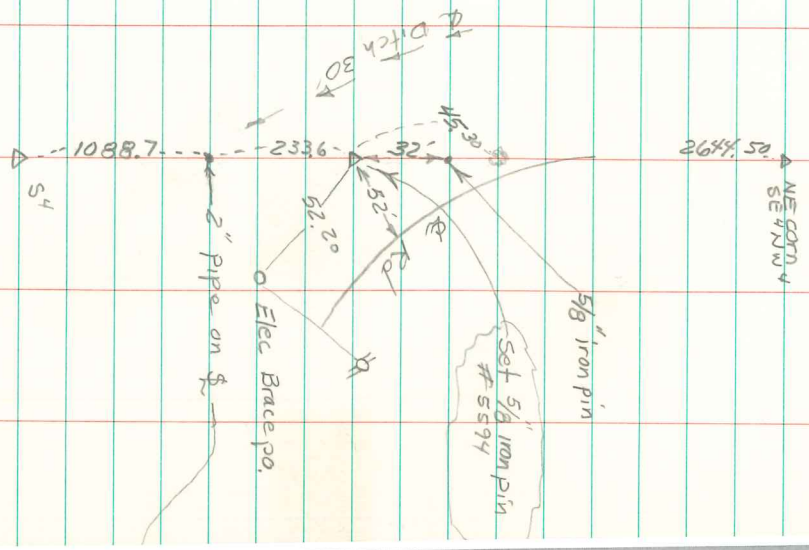


SE COR. NE 1/4 SW 1/4
 Sec. 4-75-18



Set corner on line and at proportional distance
 between the S⁴ corner and the NE cor of the
 SE 1/4 NW 1/4 sec 4-75-18, Abie Davis 2/14/08

Dec. 18, 1939

E 1/4 cor. Sec. 31-74-18 Liberty-Twp

Notes Jackson
 Dec. 84

