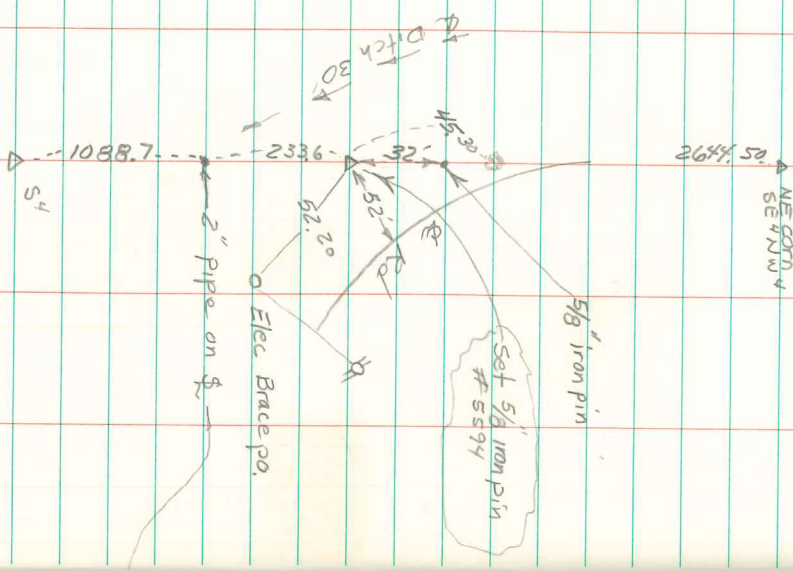


SE COR. NE⁴ SW⁴
 Sec. 4-75-18



Set corner on line and at proportional distance
 between the S⁴ corner and the NE cor. of the
 SE⁴ NW⁴ sec 4-75-18, Abie Davis 2/14/08

Point on 1/4 Sec line
 1088.7' N. of S⁴ Cor. Sec 4-75-18

