

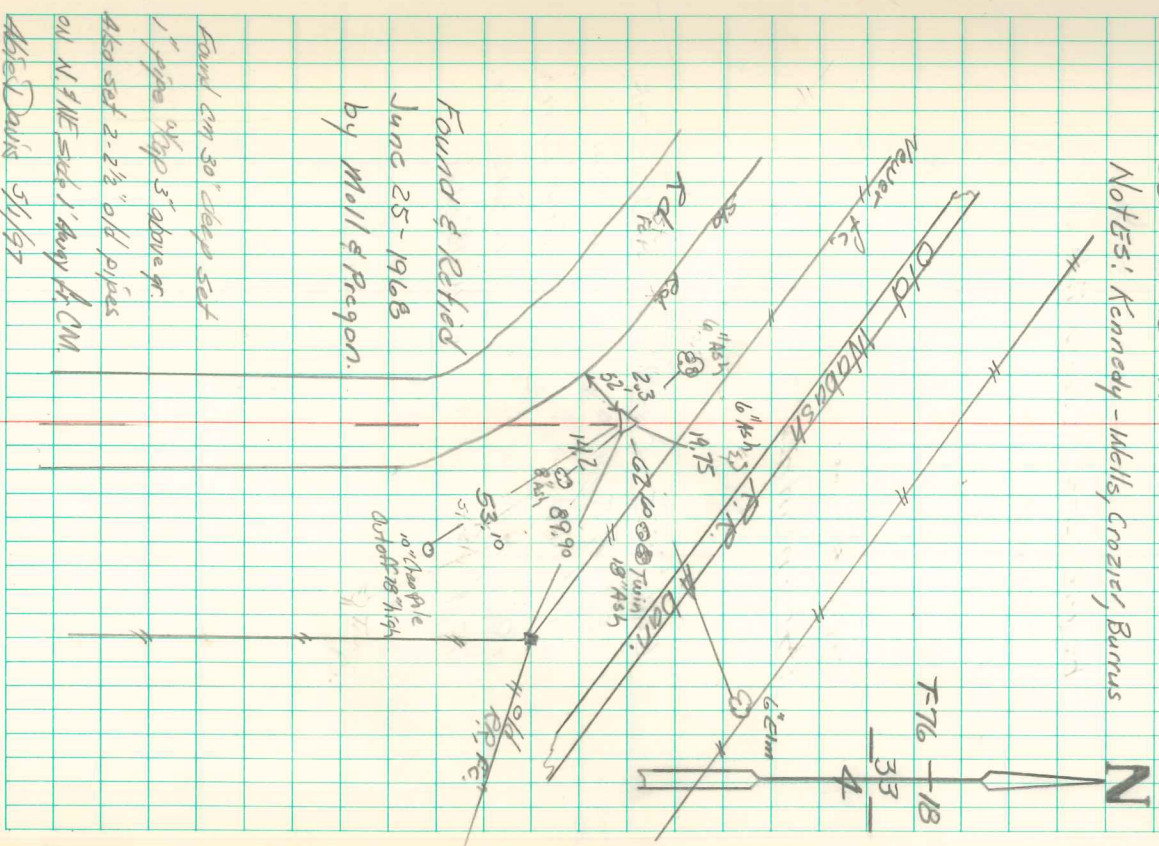
Found broken lime Rock 12"  
 below surface Probably had been  
 hit & broken in excavating borrow  
 pit for Rail Road.

Set c.m. over 1-2" Horse shoe tile  
 standing on END,  
 Stone on top c.m.

N<sup>1</sup>/<sub>2</sub> Cor sec 4-75-18

Set - 2-18-41

NOTES: Kennedy - Wells, Crozier, Bunnis



Found & Retied  
 June 25 - 1968  
 by Moll & Reagon.

Found c.m. 30' deep set  
 1 pipe of top 3' above gr.  
 Also set 2-2 1/2" o/d pipes  
 on N.W. side 1' away fr. c.m.  
 Alvin Davis 5/1/67