

M.F. Cor 5-75-18

Set: 11-15-39

Ross, Hergen, Eddinger

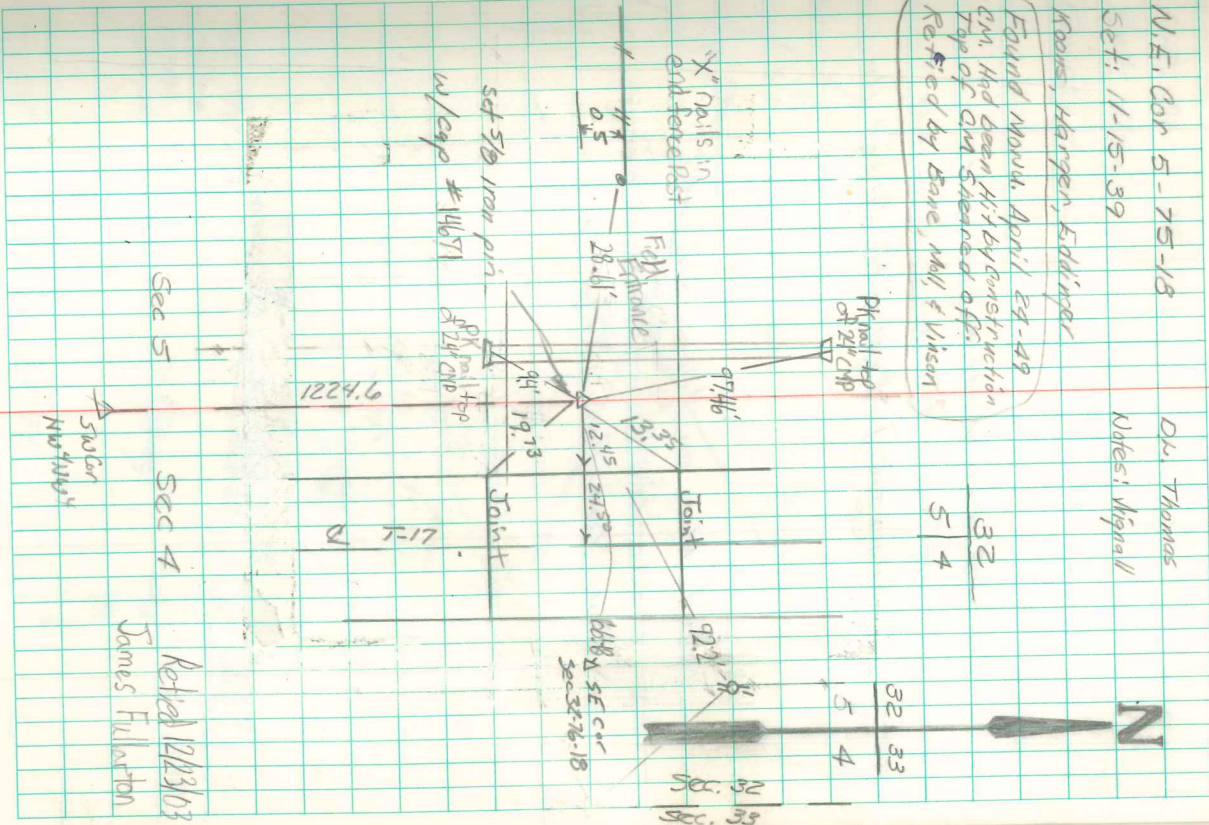
Found Mon. April 29-49

CM. Had been 45' by construction
Top of CM Strengthened off.
Retired by Bone, Mall & Wilson

Dr. Thomas
Notes: Wynall

32
5 4

32 33
5 4



Retired 12/23/03
James Fullerton

Found lime stone 18" x 12" x 2" and
2-D tile.

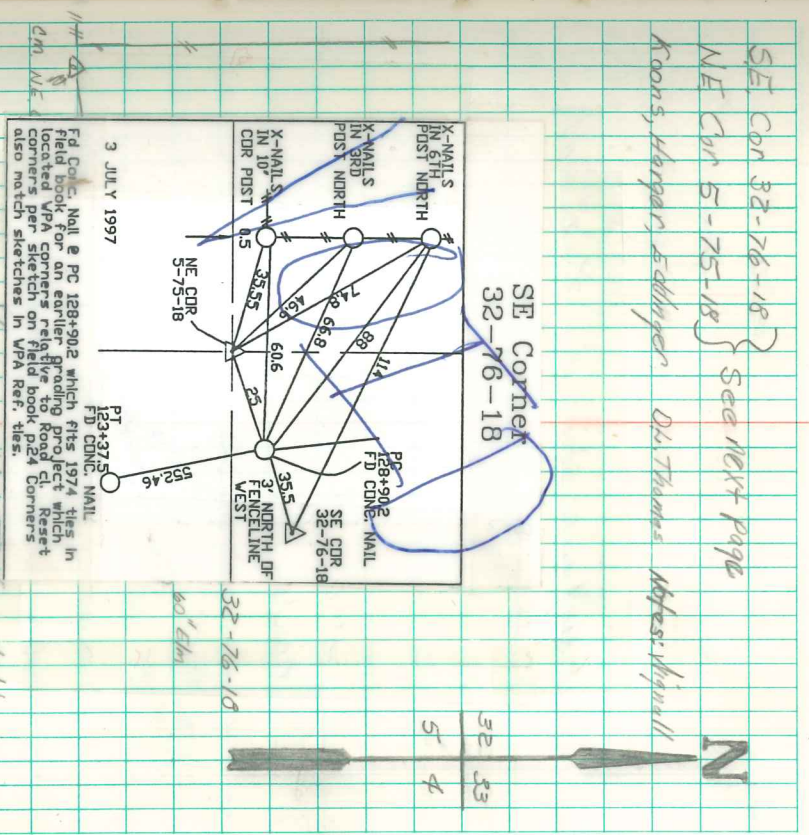
Set CM over D tile Horiz. N & S
Anomaly on N.S. Stone on E. side.

Found Sandstone 16" X 14" X 3"

Set 2m over Crackerly placed stone on West side.

SE Cor 32-76-18 } See next page
 NE Cor 5-75-18

Roads, Harpan, Edginger Dr. Thomas Address: Highway



Note: This is a double corner. These ties are for the S.E. Cor. 32-76-18. On the next page (or) will be found ties for N.E. Cor 5-75-18. Not noticed until copy was completed.