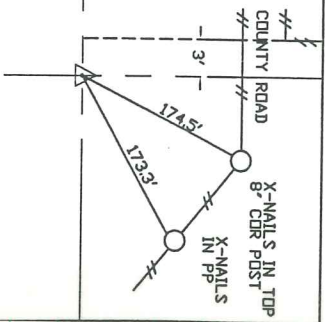


SW Cor
NW FR1/4-NW FR1/4
5-75-18
SCALE

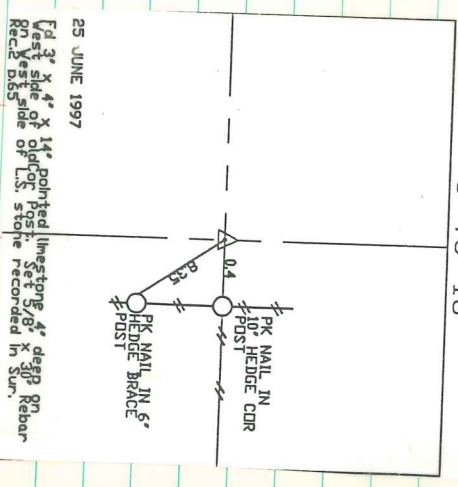


3 JULY 1997
 Established corner on line and proportioned
 distances from NW 1/4 P. 19 N. 65 W. 3-75-18.
 Recorded Survey (Sur. Rec. 165) by
 Marion Verros-Long the land owner but has been
 destroyed by terrace construction. Set 5/8\"/>





NW Corner South 16 Acres
NW FR1/4-NW FR1/4
5-75-18



25 JUNE 1997

Ed 3' x 4' x 14' pointed limestone 4" deep on
on West side of lot. Post. Set 5/8" x 3/8" Rebar
Rec'd D&S Stone recorded in Surv.