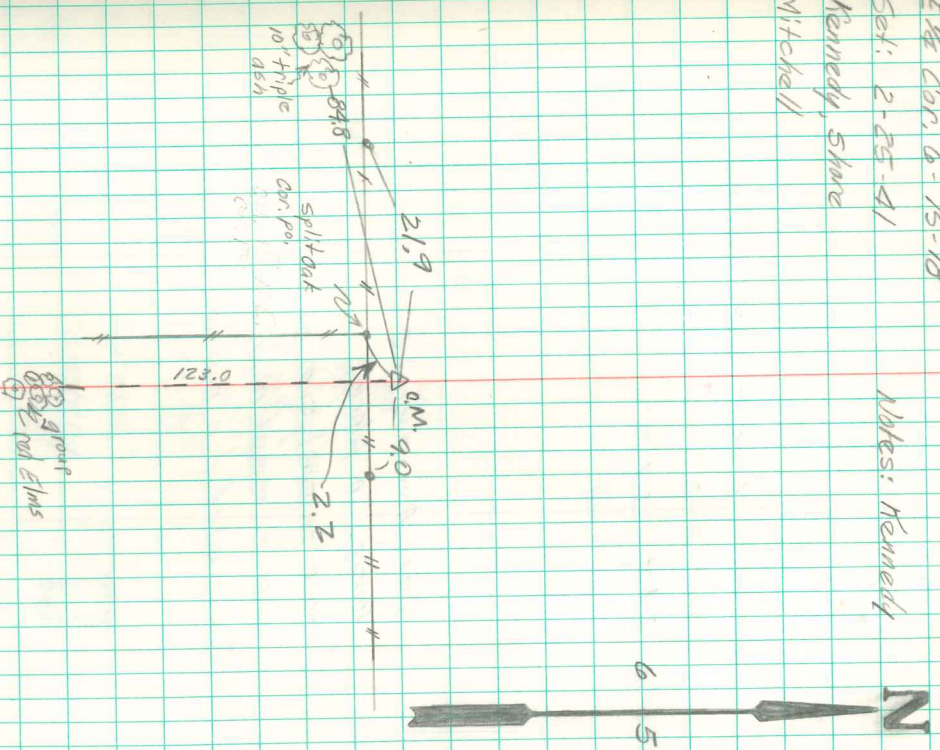


Found lime stone 2" x 8" x 14"
on end over 2-2" round tile
(Watkins tile)
Pait where we set Mon.

Set Mon. over 1-2" O tile
lowered in place, top Mon. 12"
under surface.
Placed 1-2" tile over dm
stone on top Mon.

E 1/4 Cor. 6-75-18
Set: 2-25-41
Kennedy, Stone
Mitchell

Notes: Kennedy



Found & re tied
10/7/97