

Recorder's Index
County: MARION
Section 8, T75N, R18W, 5TH P.M.
City: NA
Subdivision: NA
Block: NA
Lot(s): N/A
Proprietor: N/A
Requested By: MARTIN MARIETTA

Instr. Number: 22-4397  
 BK: 2022 PG: 4397  
 Recorded: 8/15/2022 at 8:56:05.0 AM  
 County Recording Fee: \$7.00  
 Iowa E-Filing Fee: \$3.13  
 Combined Fee: \$10.13  
 Revenue Tax:  
 NAOMI ELLIS, RECORDER  
 Marion County, Iowa

Prepared by: Lamp Rynearson Address: 14710 W. Dodge Rd., Ste 100 Omaha, NE 68154 Phone: (402) 496-2498

UNITED STATES PUBLIC LAND SURVEY CORNER CERTIFICATE FOR

Land Survey monument situated in Section 8, Township 75 NORTH, Range 18 WEST, of the Fifth Principal Meridian, Marion County, Iowa. Previously recorded in NA In County Recorder's Office.

MONUMENT DESCRIPTION AND REMARK \_\_\_\_\_

USING SECTION CORNER TIES FOUND IN MARION COUNTY ENGINEER'S OFFICE, FOUND BROKEN PIECES OF LIMESTONE MONUMENT; 3.5' BELOW GRADE; SET 5/8"X24" REBAR W/ 1 1/4" YPC "SURVEY MARKER" LS-17613 ABOVE LIMESTONE MONUMENT USING SAID TIE DISTANCES

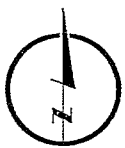
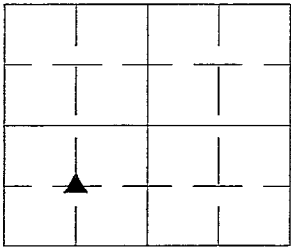
ALL DISTANCES ARE HORIZONTAL

1975 IOWA HIGHWAY COMMISSION NOTES FOUND IN MARION COUNTY ENGINEER'S OFFICE DESCRIBED FOUND CORNER AS BROKEN LIMESTONE

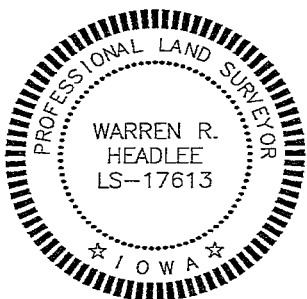
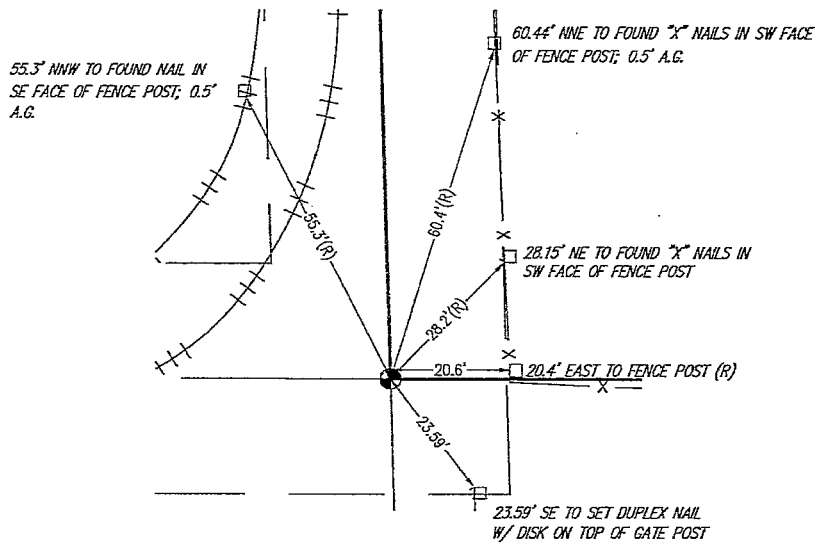
PLAN-VIEW

SW CORNER, NE 1/4, SW 1/4  
 Sec. 8-75-18

Found broken pieces of Limestone Monument  
 Set 5/8" rebar w/ 1-1/4" YPC LS-17613  
 (R) 1975 Iowa Highway Commission  
 (see description above)



Not to Scale



I hereby certify that this land surveying document was prepared and the related survey work was performed by me or under my direct personal supervision and that I am a duly licensed Land Surveyor under the laws of the State of Iowa.

Warren R. Headlee 8-11-22  
 Signature Date

Printed or typed name: WARREN R. HEADLEE

License number: LS-17613

My license renewal date is: DECEMBER 31, 2022

Sheets covered by this seal: 1

Corners to be Indexed  
 SW CORNER, NE 1/4, SW 1/4  
 Sec. 8-75-18

N.E. Cor S.W. 1/4 SW 1/4 Sec-8-75-1B  
Found By I.H.C.  
1975

