

Prepared by Abie C. Davis, P.E. & L.S., 1428 Oregon St., Knoxville, IA 50138 (641) 842-5863

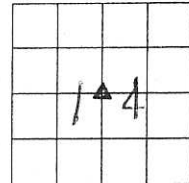
# UNITED STATES PUBLIC LAND SURVEY CORNER CERTIFICATE

OF  
Land survey Monuments situated in Section 14, Township 75N, Range 19W, of the Fifth Principal Meridian, Marion County, Iowa.

Previously recorded in N/A in County Records Office.

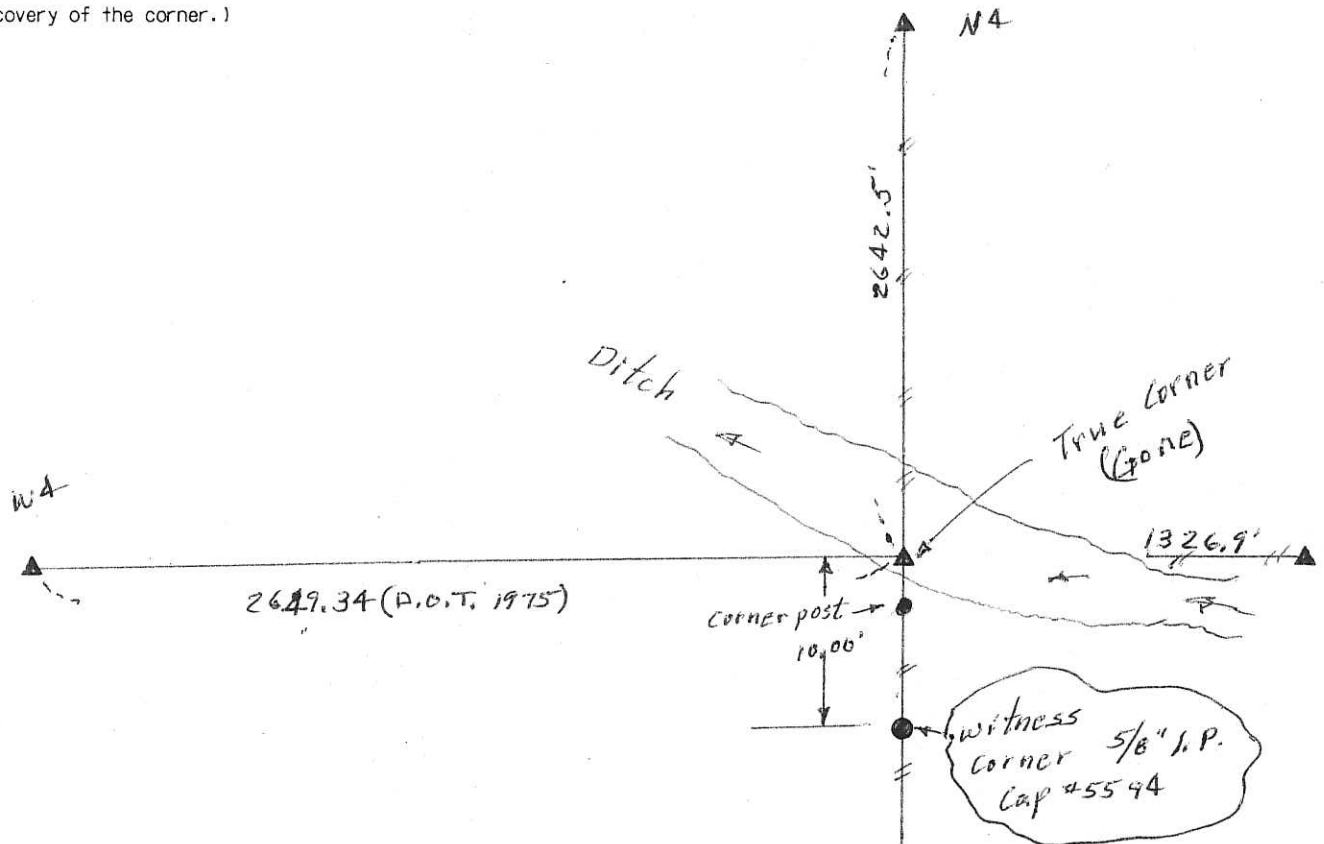
(book, page, document number, etc.)  
Show reason for preparing this certificate, the evidence and detailed procedures used in establishing the corner positions and monumentation found or placed

Monument Description and Remarks: 4"X4" Conc. Mon. set by RLS #6707 in 1975 wash washed out and lost due to bank erosion of big ditch. Set witness corner in fence line 10' 50" of true corner. from 1975 Tics.



## PLAN - VIEW

(Show a minimum of three reference ties to durable physical objects, relevant monuments and physical conditions that will enable recovery of the corner.)



I hereby certify that the survey work was completed and this land surveying document was prepared by me or under my direct personal supervision and that I am a duly licensed land surveyor under the laws of the state of Iowa

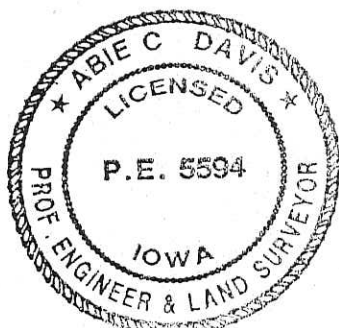
Signature: Abie C. Davis

Abie C. Davis, P.E. & L.S.

Date: 3/22/16 Reg. No. 5594

My license renewal date is December 31, 2017

SEAL



List Corners to be Indexed  
Corners Section Twp Range

ctr 14 75N 19W

Center Sec 14-75-19

Set By Duane B. Meinen R.L.S.

Established in 1975

For Iowa Rept Trans.

N

