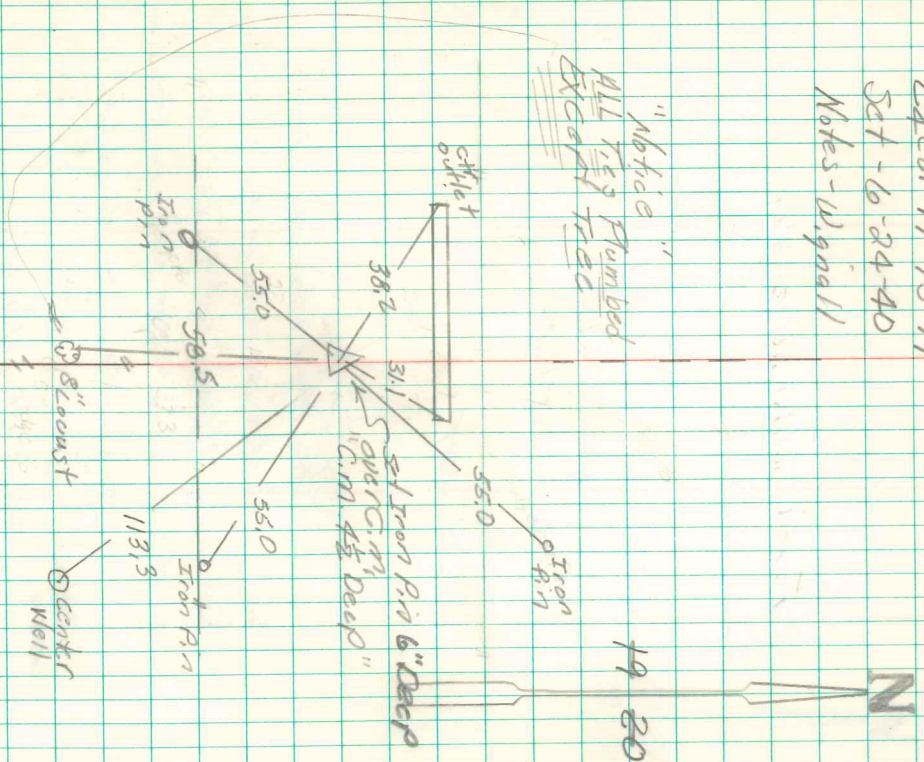


Found 2-1/2" DTile

Set c.m. over 1-1/2" DTile

Excav 19-75-19  
Set - 6-24-40  
Notes - Wynnall

"Abrasive"  
ALL TIES PLUMBED  
EXCEPT TIES



Set & Rethed  
Aug - 30 - 1977  
Muller Raupon

Found 2-1 1/2" DTile

Set c.m. over 1-1 1/2" DTile

Excav 19-75-19  
Set - 6-24-40  
Notes - Wagon

"Abrasive"  
ALL TIES PLUMBED  
EXCAVATED

