

Found sandstone 12"x6"x4"
and Broken Watkins tile

Set C.M. over 1-3" Drain tile
and Broken tile & stone on
TOP C.M.

11.8' S.W. of 14" Locust
13.5' West " 10" "
29.2' N.W. " 10" "

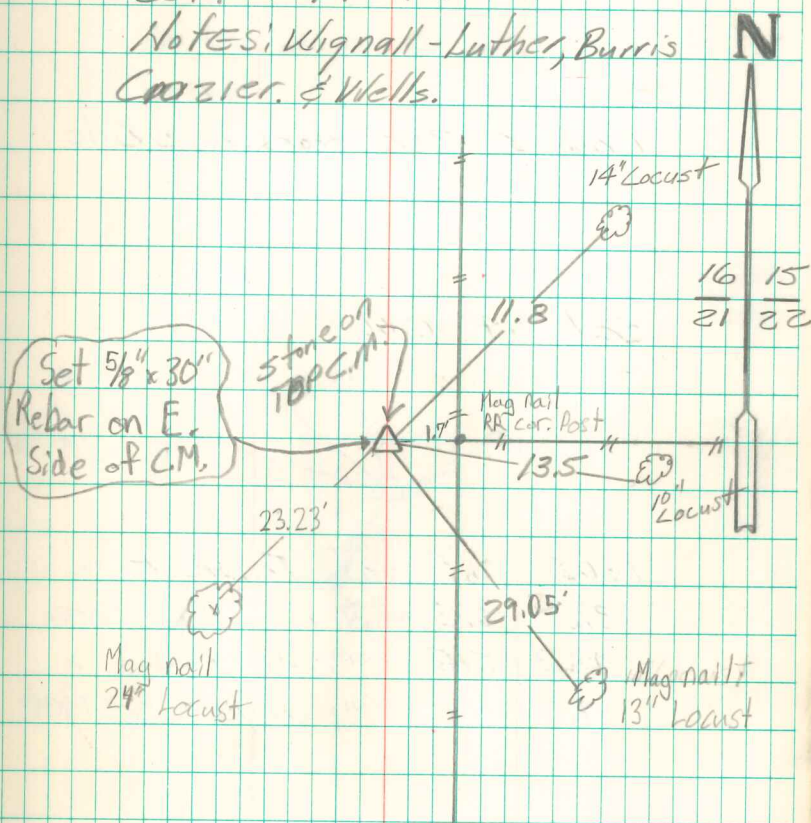
Fnd. 4"x4" WPA conc. mon
w/ Brass cap 6" Deep on
W. side of RR tie cor. post.

N.E. Cor sec 21-75-19

2

Set: 7-17-40

Notes: Wignall-Luther, Burris
Crozier, & Wells.



Retied 1/23/88
Randal J. Nugteren