

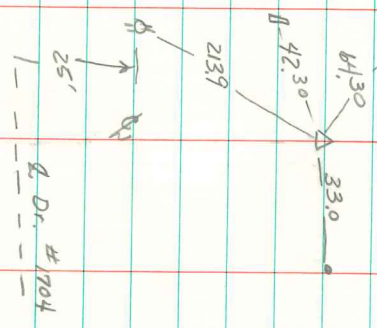
S4 Corner

Sec 19-75-19

NE Cor
SE 1/4 SW 1/4
SEC 19 T41N



Set 5/8" iron pin
w/cap # 55943 deep



NE Cor. SE 1/4 SW 1/4
Sec. 30. 75-19

set corner on line at proportional dist between

Chr Sec 19 & NE Corner SE 1/4 SW 1/4 Sec 30,

4/2/02 Abie Davis