

Found  $\frac{3}{4}$ " Bolt 15" Long with  
Knob on END Drove Down Through  
2-2" D Tile

Set c.m. over 1-2" D Tile Lowered  
in Place.

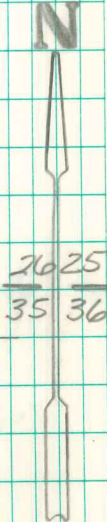
Bolt on North side c.m.

N.E. Cor 35-75-19

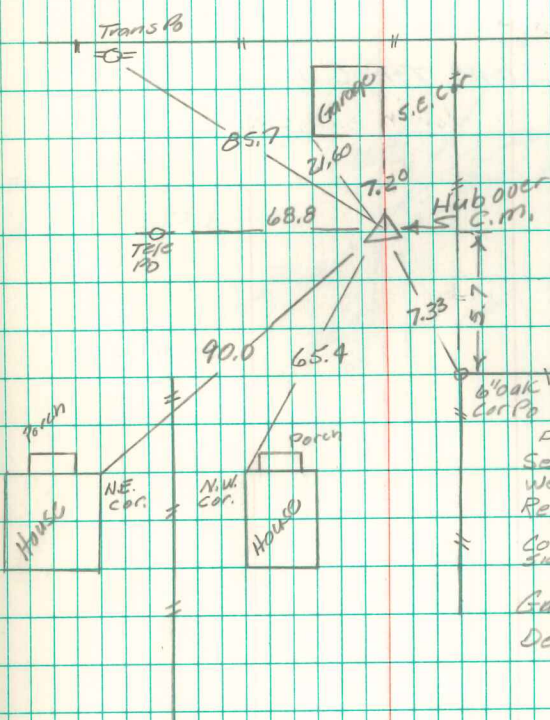
Set 9-6-41

Notes: Kennedy

Party = Shore & Kennedy



2625  
35 36



Found Conc. Man 10' deep  
Set  $\frac{3}{4}$ " x 24" Pipe on  
West side of  $\frac{1}{2}$ " x 8"  
Rebar over C.M.  
Corner is on SW  
side of bush  
Garden Eng.  
Dec. 9, 1985

Retied 7/15/97 David Hiller