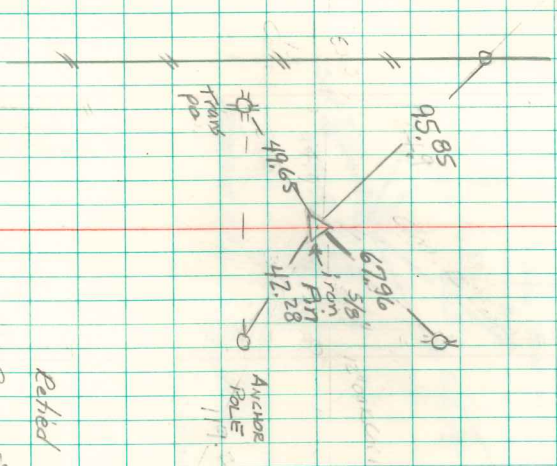


Found 2-2" D Tile with Iron
Rod $\frac{1}{2}$ " x 24" Long Down Through
Tile

Set c.m. over 1-2" D Tile with Iron
Rod through Tile

Top c.m. 12" under Surface

4th Cor 5-75-19
Set - 7-15-41
Notes = Kennedy
Party - Shore & Kathar



Revised 9/23/81
Regan, Stone, Davis
8/4/89
Regan & Walle
1/5/00 AB & Davis