



Document 22-3893

Book 2022 Page 3893 Type CORNR Pages 1
Date 7/18/2022 Time 12:53 PM
Rec Amt \$7.00



GARDEN & ASSOC.

P.O. Box 451, Oskaloosa, Iowa 52577-0451 Phone: (641)672-2526

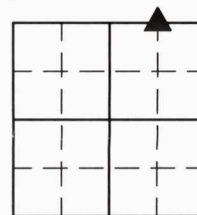
NAOMI ELLIS, RECORDER
MARION COUNTY IOWA

UNITED STATES PUBLIC LAND SURVEY CORNER CERTIFICATE

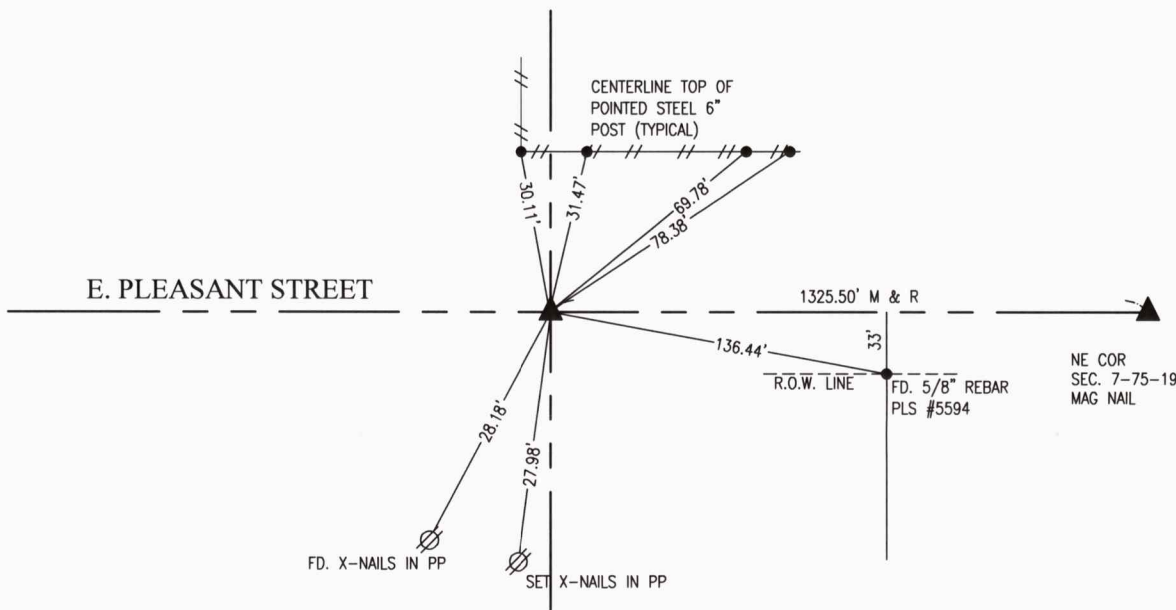
OF

Land Survey Monuments situated in Section 7, Township 75, Range 19, of the Fifth Principal Meridian, MARION County, Iowa. Previously recorded in N/A in County Recorder's Office.

Monument Description and Remarks: SEE BELOW



NW CORNER
NE 1/4-NE 1/4



JULY 12, 2022
RESET MISSING CORNER RECORD DISTANCE FROM NE CORNER SECTION 7 AND 33.00' NORTH OF FOUND PROPERTY CORNER.

SET LARGE MAG NAIL IN CONCRETE PAVING 1.00' NORTH OF CENTERLINE JOINT AND 0.15' EAST OF SAW CUT.

I hereby certify that this land surveying document was prepared and the related survey work was performed by me or under my direct personal supervision and that I am a duly licensed Professional Land Surveyor under the laws of the State of Iowa.

Gary Wayne Keith 14 July 2022
Gary Wayne Keith, P.L.S. Date

License number: 11420

My license renewal date is December 31, 2022

SEAL



List Corners to be Indexed
Corners Section Township Range

NW CORNER 7 75 19
NE 1/4-NE 1/4

pd. #100 CHK, Ret. - Garden & Associates, env.

$N\frac{1}{4}$ of the $N.E.\frac{1}{4}$ sec 7-75-19

