

Found buggy AXLE.

Set a.m. where we found buggy AXLE.

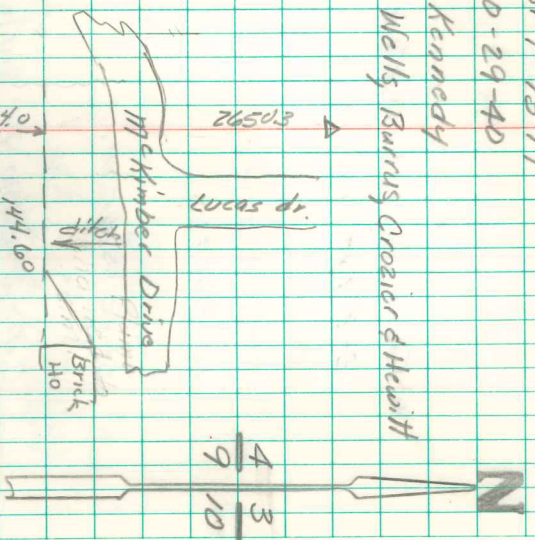
Set c.m. over 1-2" Ditch standing on END.

Buggy AXLE on North side a.m.

N.E. Cor 9-75-19
Set - 10-29-40

Notes - Kennedy

Party = Wells, Burrus, Crozier & Hewitt



Set of 7/25/40 Able Drive