

E 1/2 Cor 13-75-20
Set - 10-27-41

Notes: Kennedy

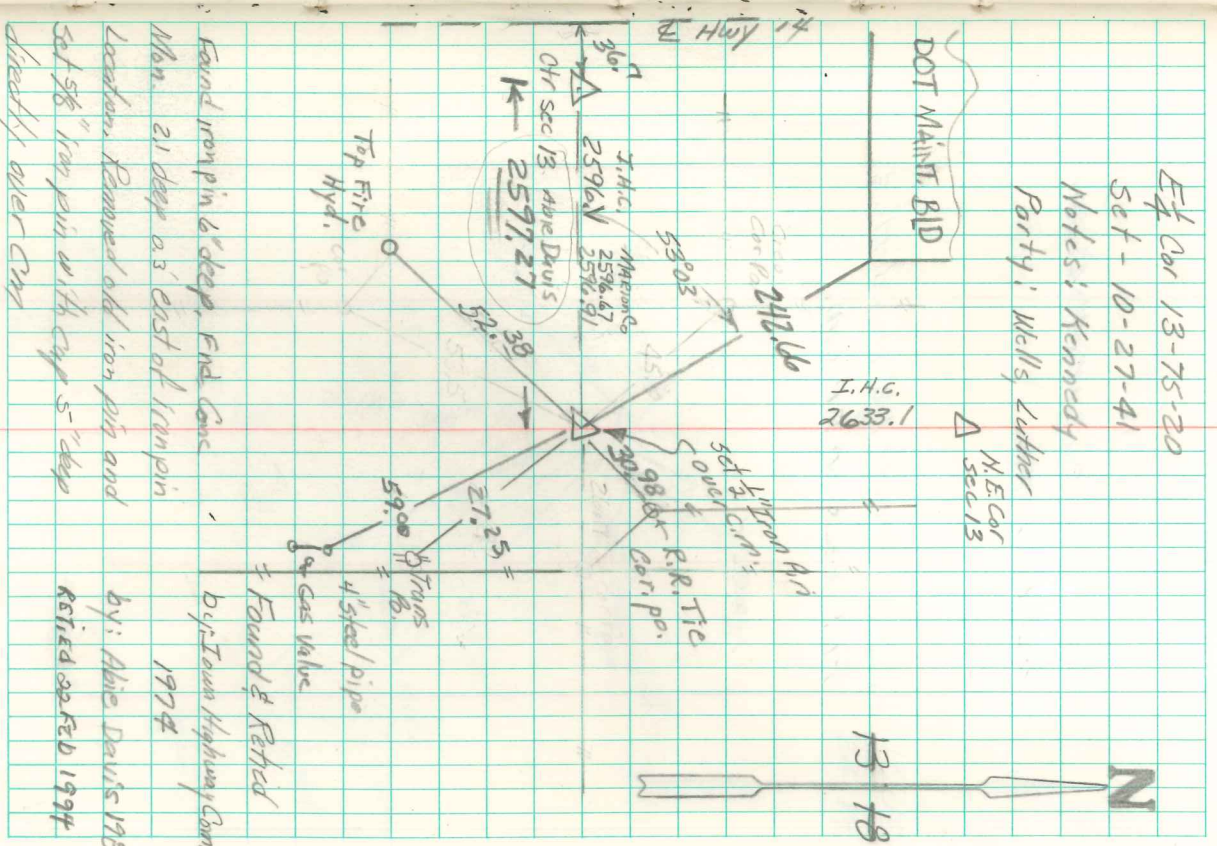
Party: Wells, Luther

N.E. Cor
Sec 13

DOT MAINT. BID

I.H.C.
2633.1

Found 2-3" Drain Tile Filled with
Concrete
Set C.M. over 1-3" Drain Tile & Put
Chunk of Concrete 8x8x6" on
TOP of C.M.



Found iron pin 6' deep, End Conc
Mon. 21' deep as east of iron pin
Location. Removed old iron pin and
set 5/8" iron pin with cap 5" deep
directly over Ch

Abie Davis 7/10/98

Found & Ret'd
by: Iowa Highway Comm.
1974

by: Abie Davis 1987
Ret'd 22 Feb 1994