

Instr. Number: 24-625  
 BK: 2024 PG: 625  
 Recorded: 2/21/2024 at 9:37:50.0 AM  
 County Recording Fee: \$7.00  
 Iowa E-Filing Fee: \$3.00  
 Combined Fee: \$10.00  
 Revenue Tax: \$0.00  
 NAOMI ELLIS, RECORDER  
 Marion County, Iowa

Prepared by & Return to: Isaiah M. Reicks, HRS, LLC, 2206 East Bremer Avenue, Waverly, IA 50677, Phone 319-483-5187

### United States Public Land Survey Corner Certificate

Land Survey Monument situated in  
 Section 13, Township 75 North, Range 20 West of the Fifth Principal Meridian, Marion County, Iowa.  
 Not on file in the County Recorder's Office.

This certificate is being prepared in compliance with Iowa Code Chapter 355.11 because: }

- There is no certificate on file for this corner.
- There are no longer three valid ties of record.
- There are changes to reference ties of record.
- There is change of monumentation of record.
- To clarify description of record monument (ties).

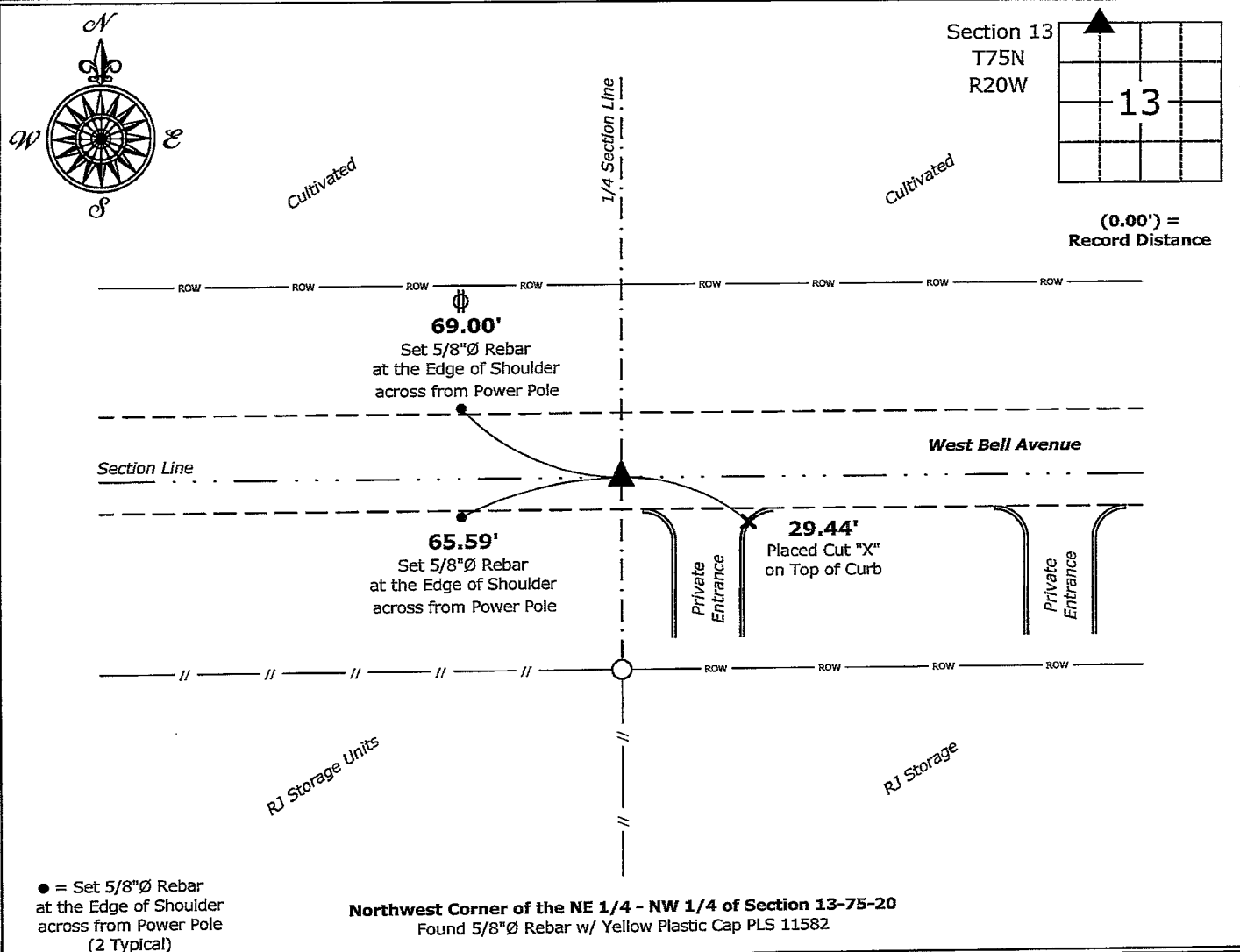
**Monument Description and Remarks:**

**Northwest Corner of the NE 1/4 - NW 1/4:**

Found 5/8"Ø Rebar w/Yellow Plastic Cap PLS 11582 with Information obtained from Surveys and Plats, as recorded in Document #15-1409 & #19-3476, both on file in the County Recorder's Office.

### Plan View - Not to Scale

(Show a minimum of three reference ties to durable physical objects, relevant monuments and physical conditions that will enable recovery of the corner.)



● = Set 5/8"Ø Rebar at the Edge of Shoulder across from Power Pole (2 Typical)

**Northwest Corner of the NE 1/4 - NW 1/4 of Section 13-75-20**  
 Found 5/8"Ø Rebar w/ Yellow Plastic Cap PLS 11582



I hereby certify that this land surveying document was prepared and the related survey work was performed by me or under my direct personal supervision and that I am a duly licensed Land Surveyor under the laws of the State of Iowa.

*Isaiah M. Reicks* 2-20-24  
 Isaiah M. Reicks Date:

License number 22468  
 My license renewal date is December 31, 2025.  
 Sheets covered by this seal: Individual sheet only

List Corner to be Indexed			
Corner	Section	Township	Range
NW-NE-NW	13	75	20

Project Number: 2024-503

FB: Misc. 12, Page(s) 22-24