

Found Iron Rod 15" Long

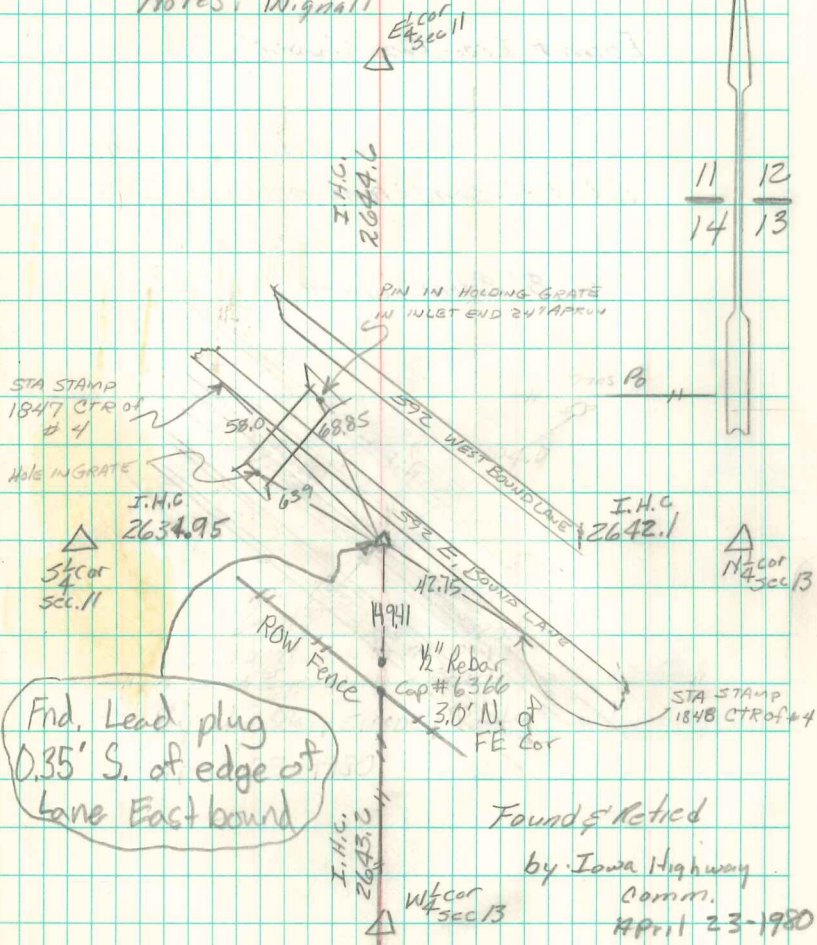
set c.m. over Iron Rod

c.m. 8" Below Surface

N.E. Cor 14-75-20

Set - 6-18-40

Notes: Wignall



Find Lead plug
0.35' S. of edge of
Lane East bound

Found & Retied
by Iowa Highway
Comm.
April 23-1980
9/13/00