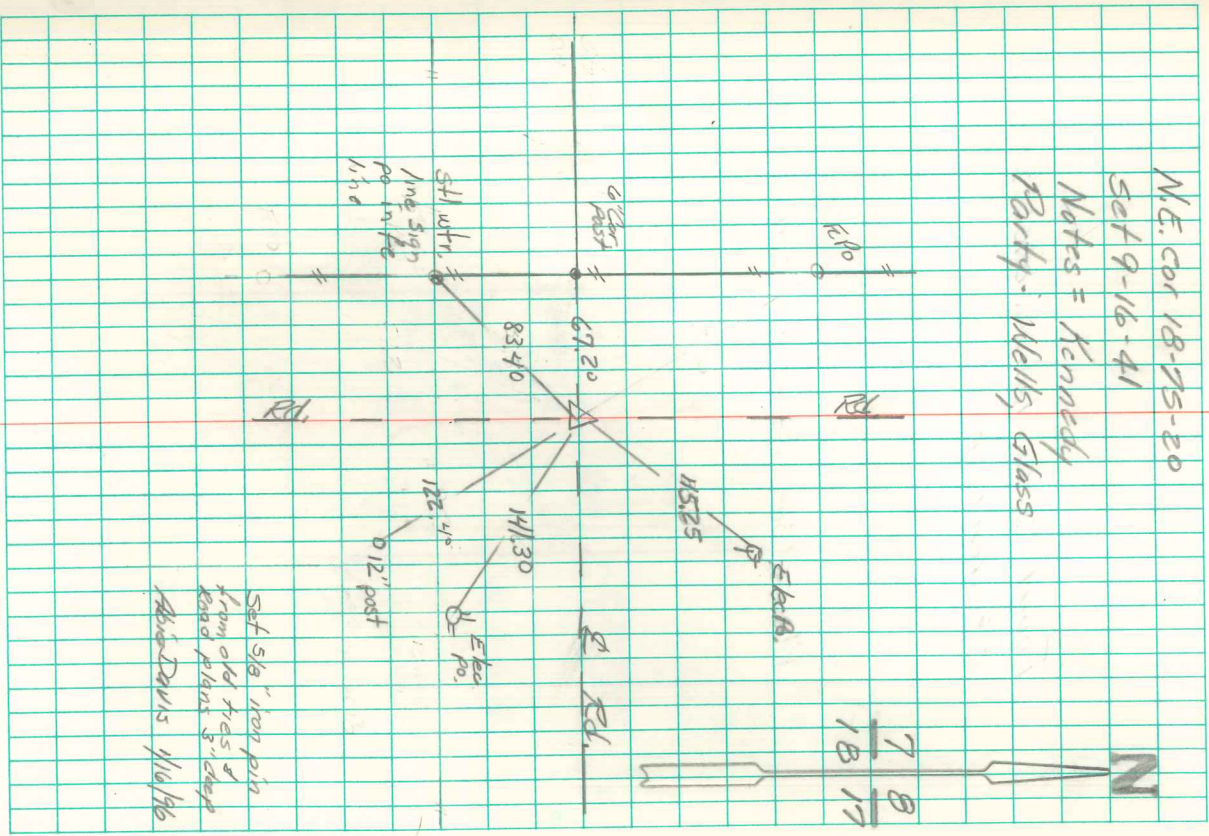


Found Sandstone 12" x 8" x 4" &
1-4" Drain Tile

Set C.M. over 1-2" round tile
" Sand stone on top C.M.

N.E. cor 18-75-20
set 9-16-41
Notes = Kennedy
Barry - Wells, Glass



Set 5/8" iron pin
from old ties of
road about 3" deep
Abid Davis 4/16/96