



Document 21-6992

Book 2021 Page 6992 Type CORNR Pages 1  
Date 11/03/2021 Time 12:12 PM  
Rec Amt \$7.00

KAREN SCHWANEBECK, RECORDER  
MARION COUNTY IOWA

Prepared By: J. Brian Morrissey, Morrissey Surveying & Consulting, LLC, 1405 Hwy. G28, Otley, Ia. 50214, 515-480-2531

# UNITED STATES PUBLIC LAND SURVEY CORNER CERTIFICATE OF

Land Survey Monuments situated in Section 22, Township 75N, Range 20W, of the Fifth Principal Meridian, Marion County, Iowa.  
Previously recorded in Bk. 1, P. 125 in the County Recorder's Office.

(book, page, document number, etc.)

(Show reason for preparing this certificate, the evidence and detailed procedures used in establishing the corner positions and monumentation found or placed.)

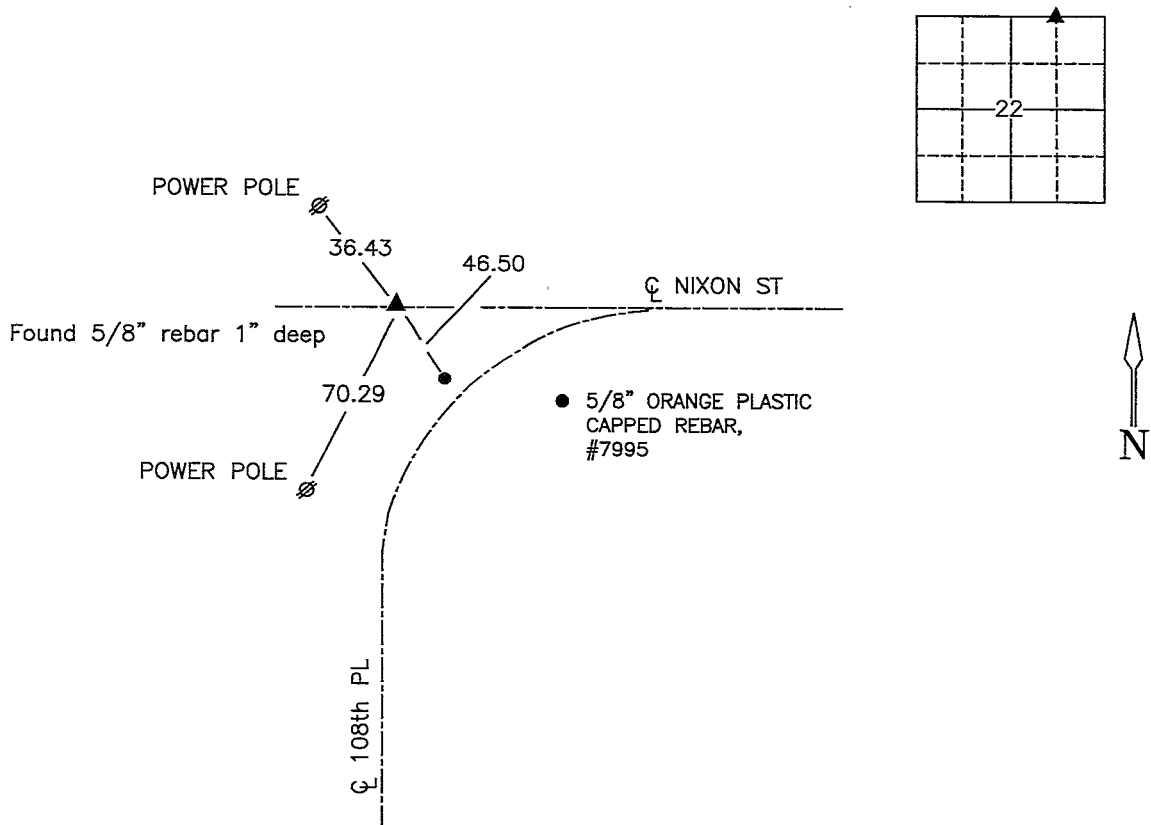
Monument Description and Remarks: Found 5/8" rebar 1" deep. Accepted position.

Previous ties altered or obliterated.

This Corner was used for a Subdivision Plat in the NE 1/4 of the NE 1/4, Section 22.

## PLAN VIEW

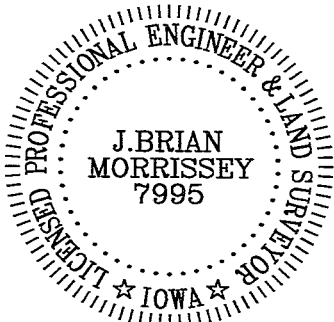
(Show a minimum of three reference ties to durable physical objects, relevant monuments and physical conditions that will enable recovery of the corner.)



NW Cor., NE 1/4 of the NE 1/4, Section 22

Date of Survey: 10/22/21

NOTE: ALL TIES TO YELLOW/ORANGE PLASTIC SURVEY MARKER UNLESS NOTED.



I hereby certify that this land surveying document was prepared and the related survey work was performed by me or under my direct personal supervision and that I am a duly Licensed Land Surveyor under the laws of the state of Iowa.

Signature: J. Brian Morrissey Date: 11/2/21  
J. Brian Morrissey

License number 7995.

My license renewal date is December 31, 2021

1134-21-2/4

1-1

Plat Book - Ret Brian Morrissey

UNITED STATES PUBLIC LAND SURVEY CORNER CERTIFICATE

OF

Land Survey Monuments situated in Section 22, Township 75 N, Range 20 W, of the Fifth Principal Meridian, Marion County, Iowa. Previously recorded in N/A in County Recorder's Office.

(book, page, document number, etc.)

(Show reason for preparing this certificate, the evidence and detailed procedures used in establishing the corner positions and monumentation found or placed.)

Monument Description and Remarks:

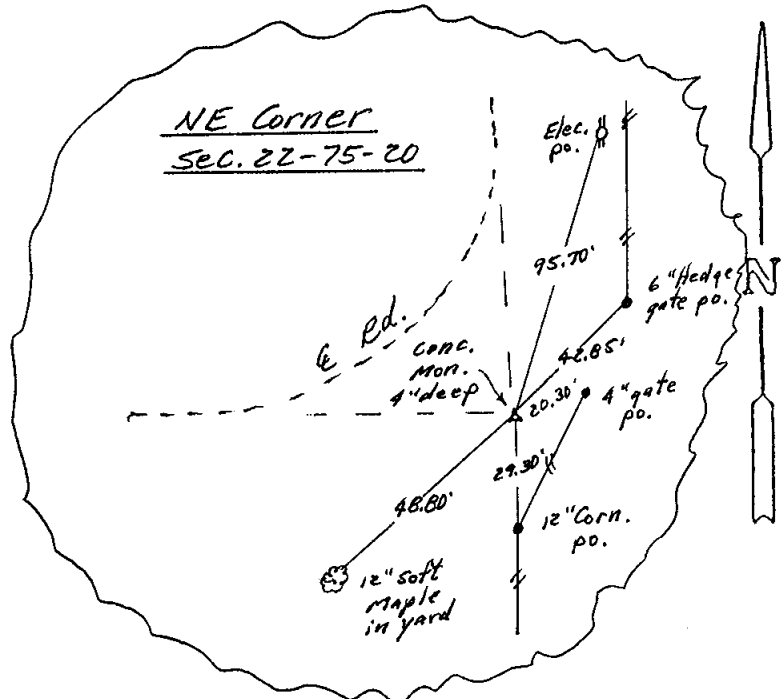
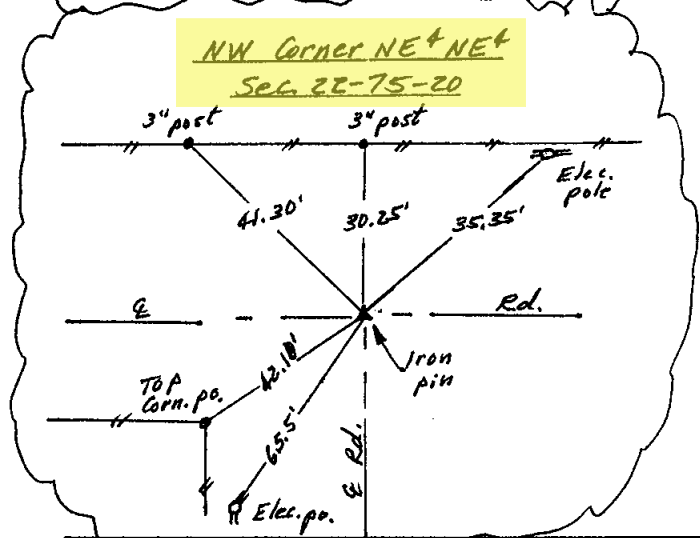
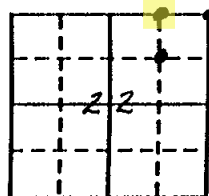
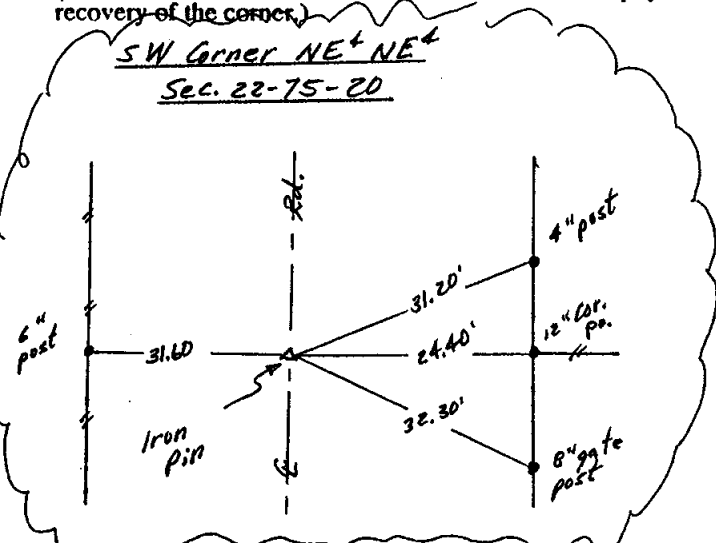
INSTR. NO. 5637  
 BOOK L PAGE 125  
 RECD. FEE 5.00

93 MAY 26 PM 1:05

TRANSFER  
 MARILYN L. VAN ZEE  
 MARION CO. RECORDER

PLAN - VIEW

(Show a minimum of three reference ties to durable physical objects, relevant monuments and physical conditions that will enable recovery of the corner.)



5" plan File in Office

I hereby certify that the survey work was completed and this certificate was prepared by me or under my direct personal supervision and that I am a duly registered land surveyor under the laws of the state of Iowa.

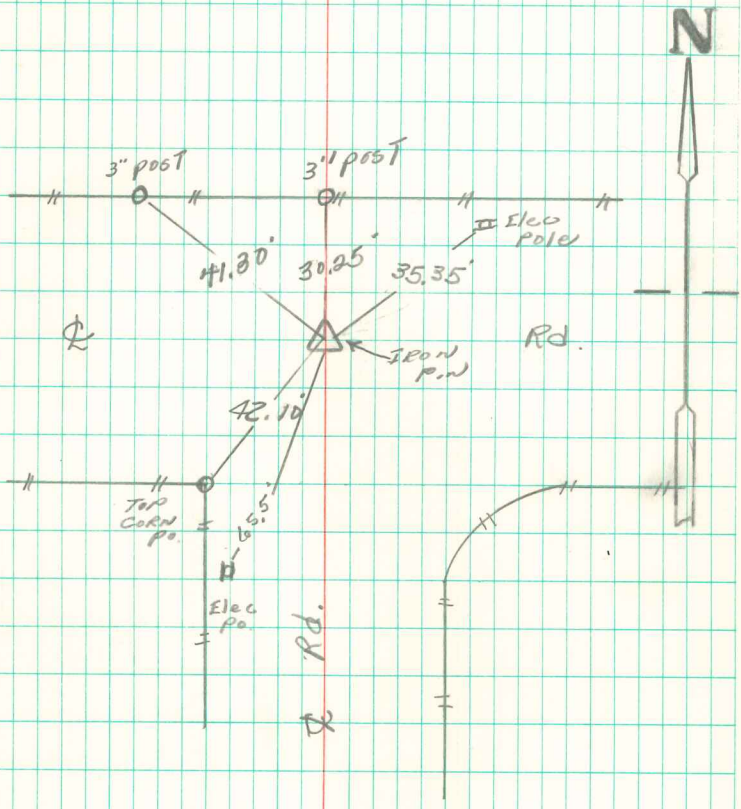
Signature: Abie C Davis  
 Name typed or printed: Abie C Davis  
 Date: 5/24/93 Reg. No. 5594



SEAL

Corners	List Corners to be Indexed Section	Twp	Range
NE	22	75N	20W
SW Corn. NE+NE+		75N	20W
NW Corn. NE+NE+		75N	20W

5 1/4 - SE 1/4 Sec 15-75-20



RETIRED 5/24/93  
Abie Davis.