



Document 21-6991

Book 2021 Page 6991 Type CORNR Pages 1
Date 11/03/2021 Time 12:10 PM
Rec Amt \$7.00

KAREN SCHWANEBECK, RECORDER
MARION COUNTY IOWA

Prepared By: J. Brian Morrissey, Morrissey Surveying & Consulting, LLC, 1405 Hwy. G28, Otley, Ia. 50214, 515-480-2531

UNITED STATES PUBLIC LAND SURVEY CORNER CERTIFICATE OF

Land Survey Monuments situated in Section 22, Township 75N, Range 20W, of the Fifth Principal Meridian, Marion County, Iowa.
Previously recorded in Bk. 1, P. 125 in the County Recorder's Office.
(book, page, document number, etc.)

(Show reason for preparing this certificate, the evidence and detailed procedures used in establishing the corner positions and monumentation found or placed.)

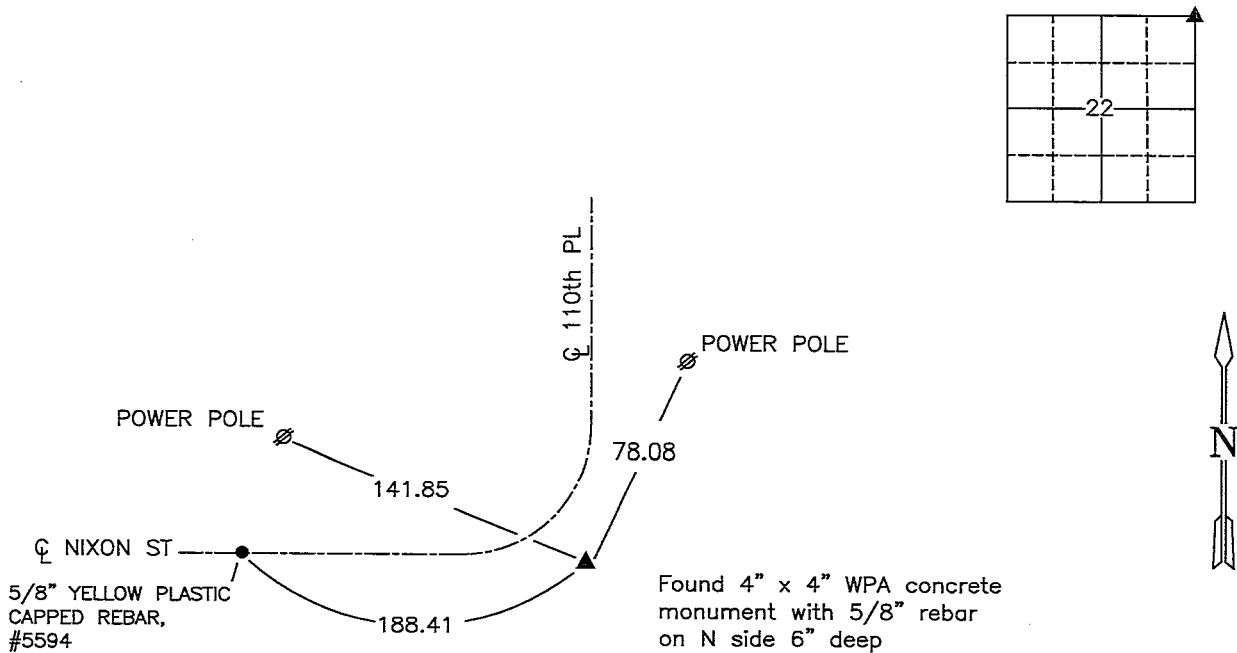
Monument Description and Remarks: Found 4" x 4" WPA concrete monument with 5/8" rebar on N side 6" deep.

Previous ties altered or obliterated.

This Corner was used for a Subdivision Plat in the NE 1/4 of the NE 1/4, Section 22.

PLAN VIEW

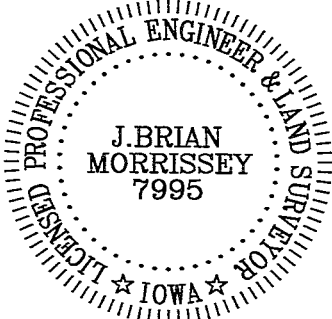
(Show a minimum of three reference ties to durable physical objects, relevant monuments and physical conditions that will enable recovery of the corner.)



NE Cor., Section 22

Date of Survey: 10/22/21

NOTE: ALL TIES TO YELLOW/ORANGE PLASTIC SURVEY MARKER UNLESS NOTED.



I hereby certify that this land surveying document was prepared and the related survey work was performed by me or under my direct personal supervision and that I am a duly Licensed Land Surveyor under the laws of the state of Iowa.

Signature: J. Brian Morrissey Date: 11/2/21
J. Brian Morrissey

License number 7995.
My license renewal date is December 31, 2021

1134-21-1/4

Pd \$700 CK - Ret Morrissey Surveying

UNITED STATES PUBLIC LAND SURVEY CORNER CERTIFICATE

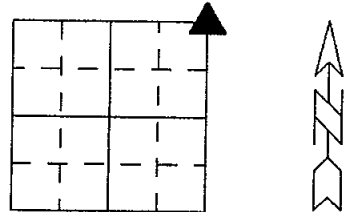
OF

Land survey Monuments situated in Section 22, Township 75N, Range 20W, of the Fifth Principal Meridian, MARION County, Iowa.

Previously recorded in N/A in County Recorders Office.

Show reason for preparing this certificate, the evidence and detailed procedures used in establishing the corner positions and monumentation found or placed

Monument Description and Remarks: SEE BELOW



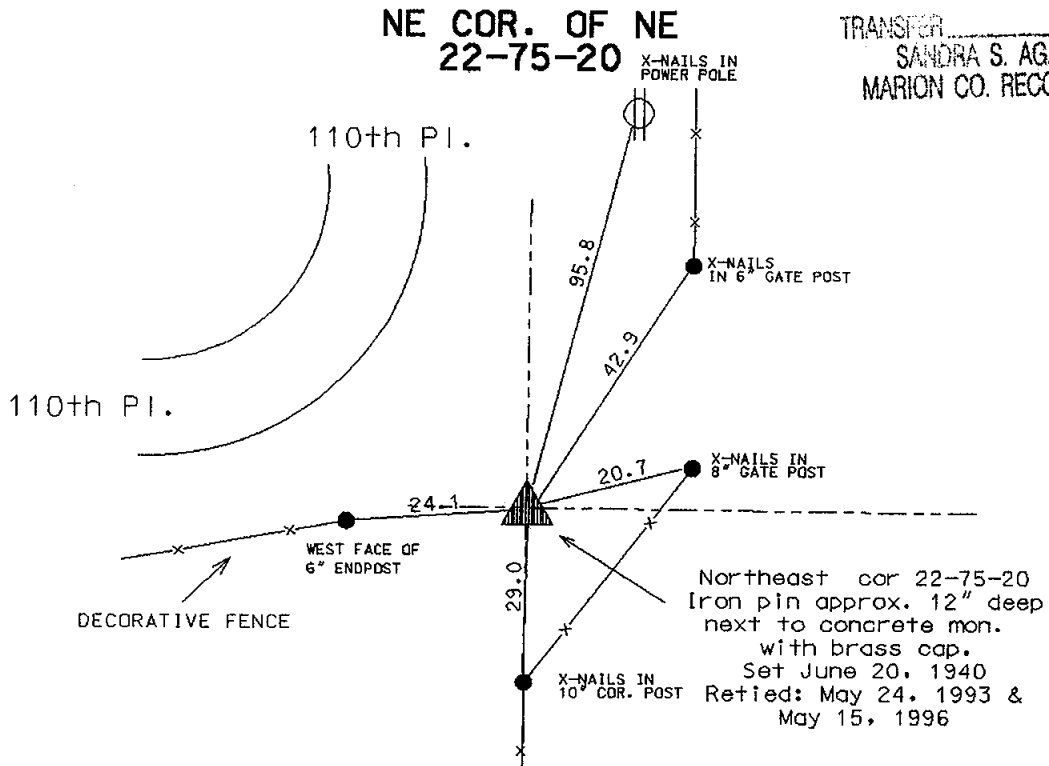
PLAN - VIEW

(Show a minimum of three reference ties to durable physical objects, relevant monuments and physical conditions that will enable recovery of the corner.)

INSTR. NO. 5389
BOOK 1 PAGE 287
RECD. FEE 6.00

96 MAY 17 PM 2:41

TRANSFER
SANDRA S. AGAN
MARION CO. RECORDER



I hereby certify that the survey work was completed and this land surveying document was prepared by me or under my direct personal supervision and that I am a duly registered land surveyor under the laws of the state of Iowa

Signature: Abie C. Davis
Abie C. Davis, P.E. & L.S.

Date: 5/16/96 Reg. No. 5594

My registration renewal date is December 31, 1997

SEAL



List Corners to be Indexed			
Corners	Section	Twp	Range
NE COR. OF NE	22	75N	20W

UNITED STATES PUBLIC LAND SURVEY CORNER CERTIFICATE

OF

Land Survey Monuments situated in Section 22, Township 75 N, Range 20 W, of the Fifth Principal Meridian, Marion County, Iowa. Previously recorded in N/A in County Recorder's Office.

(book, page, document number, etc.)

(Show reason for preparing this certificate, the evidence and detailed procedures used in establishing the corner positions and monumentation found or placed.)

Monument Description and Remarks:

INSTR. NO. 5637

BOOK L PAGE 125

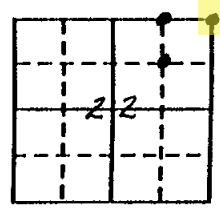
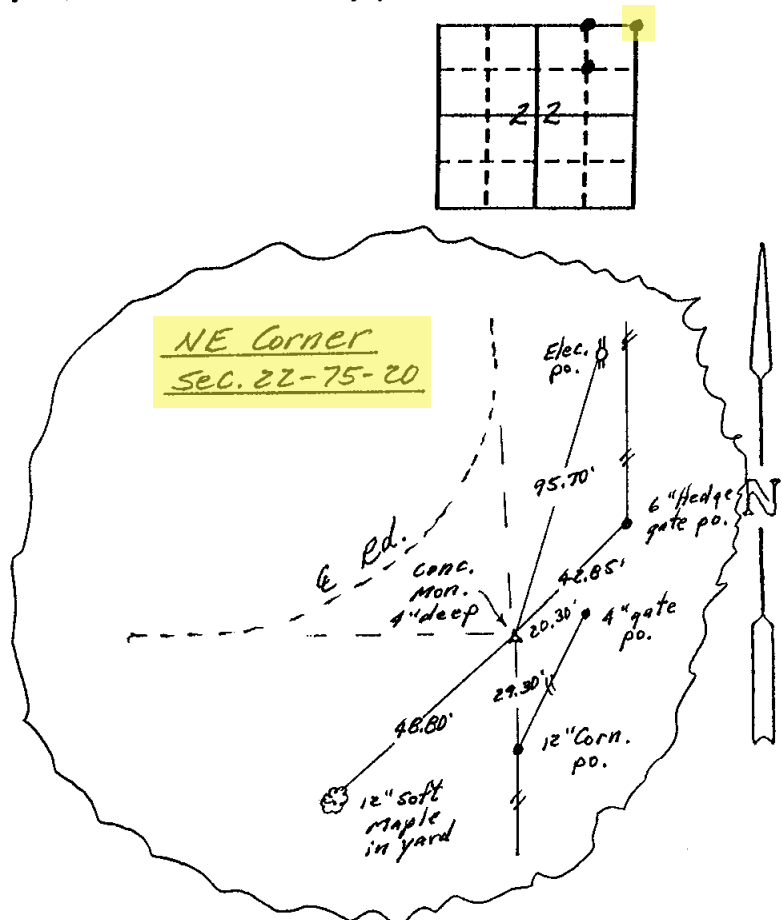
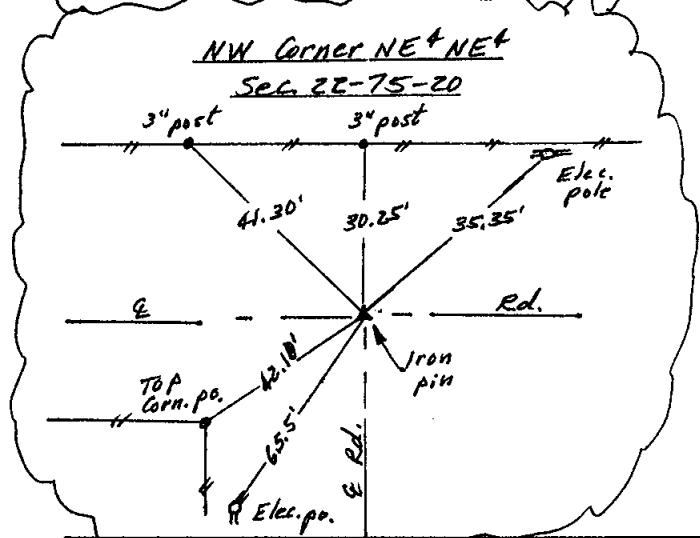
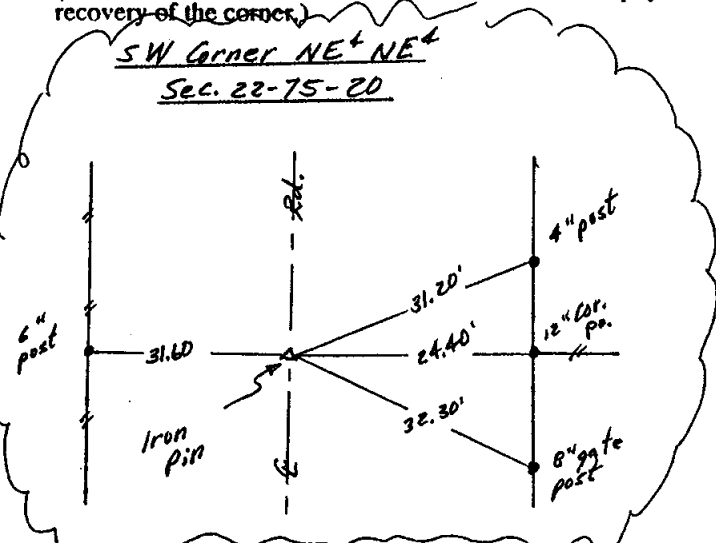
RECD. FEE 5.00

93 MAY 26 PM 1:05

TRANSFER
MARILYN L. VAN ZEE
MARION CO. RECORDER

PLAN - VIEW

(Show a minimum of three reference ties to durable physical objects, relevant monuments and physical conditions that will enable recovery of the corner.)



5" plan File in Office

I hereby certify that the survey work was completed and this certificate was prepared by me or under my direct personal supervision and that I am a duly registered land surveyor under the laws of the state of Iowa.

Signature: Abie C Davis
Name typed or printed: Abie C Davis
Date: 5/24/93 Reg. No. 5594



SEAL

Corners	List Corners to be Indexed Section	Twp	Range
NE	22	75N	20W
SW Corn. NE+NE+		75N	20W
NW Corn. NE+NE+		75N	20W

Found 3 small Granit Rocks 6"x8"x12"

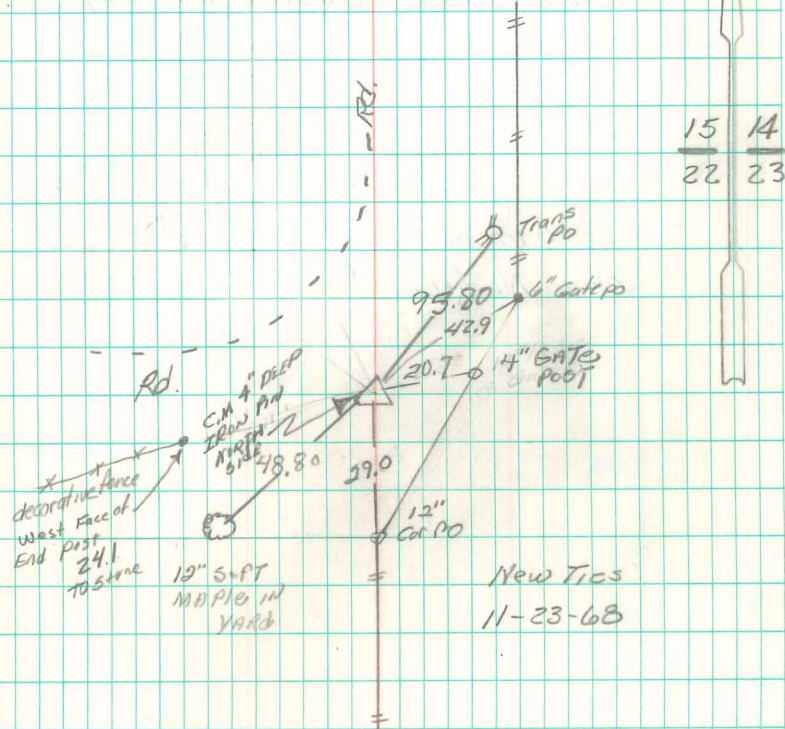
set: C.M. over 1-boulder, 1-on Top

C.M. 16" Deep

N.E. Cor 22-75-20

set- 6-20-40

Notes: W. G. Hall



RE Tied 5/24/93

ADIE DAVIS

5/15/96