

Instr. Number: 19-5561
 BK: 2019 PG: 5561
 Recorded: 11/22/2019 at 8:41:49.0 AM
 County Recording Fee: \$7.00
 Iowa E-Filing Fee: \$3.13
 Combined Fee: \$10.13
 Revenue Tax:
 KAREN SCHWANEBECK, RECORDER
 Marion County, Iowa

PREPARED BY & RETURN TO ERIC MILLER, SNYDER & ASSOCIATES, INC. 2727 SW SNYDER ROAD, ANKENY, IOWA 50023 (515) 964-2020

UNITED STATES PUBLIC LAND SURVEY CORNER CERTIFICATE OF

Land Survey Monuments situated in Section 13, Township 75, Range 20 W, of the Fifth Principal Meridian, MARION, County, Iowa. Previously recorded in BOOK 2, PAGE 135 in County Recorder's Office.
 (book, page, document number, ect.)

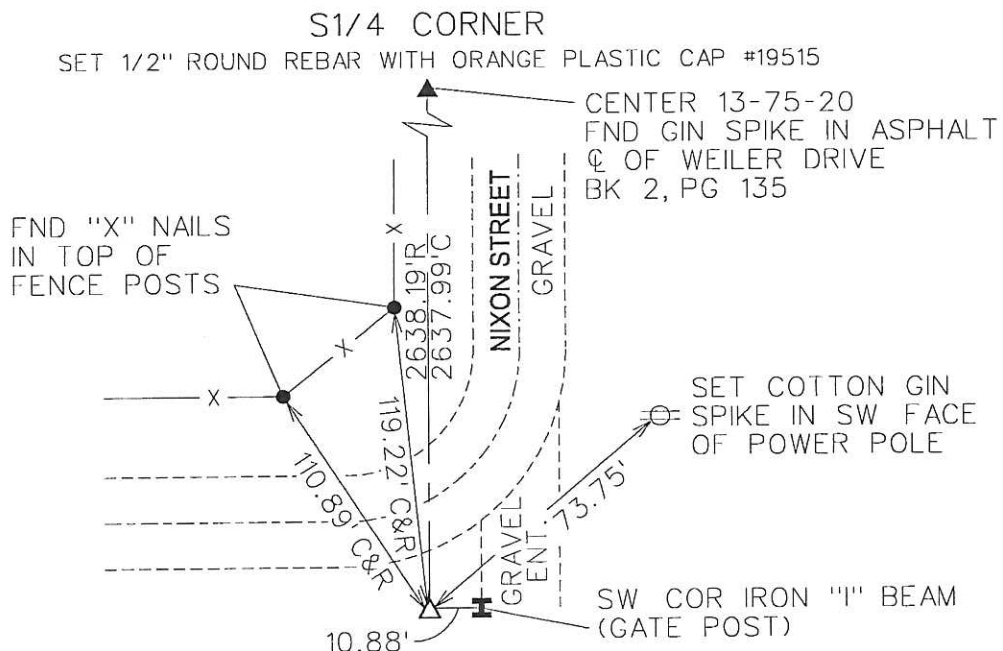
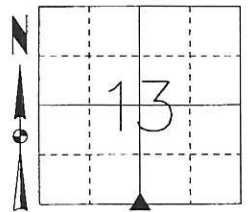
(Show reason for preparing this certificate, the evidence and detailed procedures used in establishing the corner positions and monumentation found or placed.)

Monument Description and Remarks:

S1/4 CORNER SECTION 13-75-20
 USED RECORDED SECTION CORNER CERTIFICATE. SEARCHED AREA USING METAL DETECTOR AND VISUAL SEARCH OF THE AREA. FOUND NOTHING. VERIFIED LOCATION WITH TWO REMAINING TIES AND SURROUNDING PLATS AND ESTABLISHED MONUMENT. SET 1/2" ROUND REBAR WITH ORANGE PLASTIC CAP #19515, 2" ABOVE SURFACE AS SECTION CORNER. THIS CERTIFICATE IS BEING FILED BECAUSE NO MONUMENT WAS FOUND AND THERE ARE NO LONGER THREE VALID TIES OF RECORD.

Plan-View

(Show a minimum of three reference ties to durable physical objects, relevant monuments and physical conditions that will enable recovery of the corner.)



NOTE: ALL DISTANCES MEASURED HORIZONTAL UNLESS OTHERWISE NOTED.

SBLAISDELL 11/21/2019 I:\Survey\Section_Corners\S&A_Section_Certificate\TWP_RNG_SEC_PROJECT_NUM\75_20_13_S_1190468.dgn

S&A C2



I hereby certify that this land surveying document was prepared and the related survey work was performed by me or under my direct personal supervision and that I am a duly licensed Land Surveyor under the laws of the State of Iowa.

Eric J. Miller 11-21-19
 Eric J. Miller, PLS Date

License Number 19515
 My License Renewal Date is December 31, 2020

Pages or sheets covered by this seal:
 SHEET 1 OF 1

List Corners to be Indexed

Corners	Section	Twp	Range
S1/4 COR	13	75	20
N1/4 COR	24	75	20

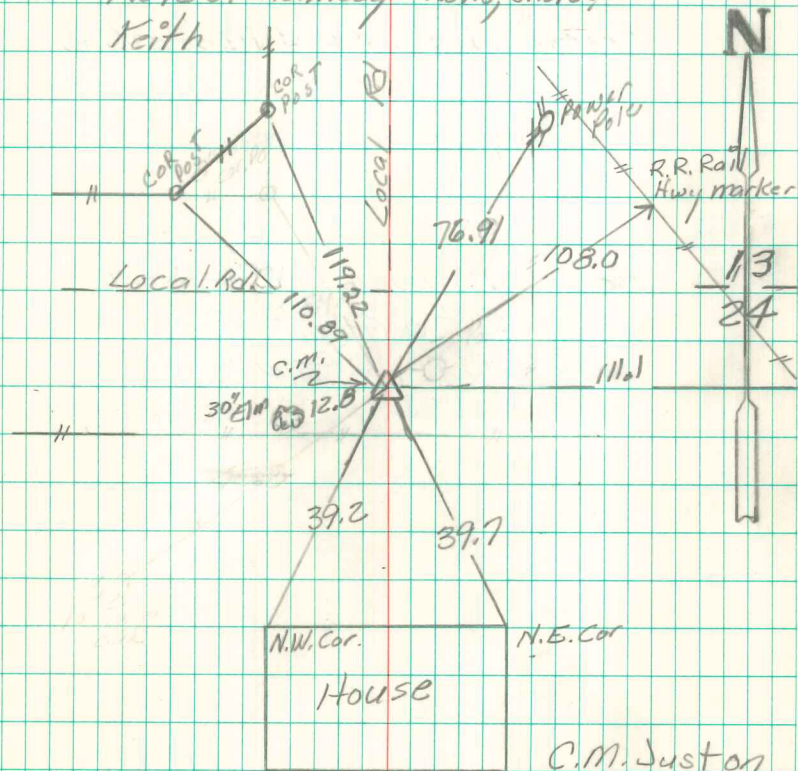
Found Brick on END of oak stake

set C.M. over 1-2" Round tile
Put a sandstone 12"x8"x4" on
Top C.M.

N 1/4 Cor sec 24-75-20

Set: Dec. 3-1941

Notes: Kennedy - Wells, Shores &
Keith



C.M. Just on
S.W. side of
Tele. Pole.

Found + Retied

Sept - 1983

4/27/2000 Craig R. Johnston