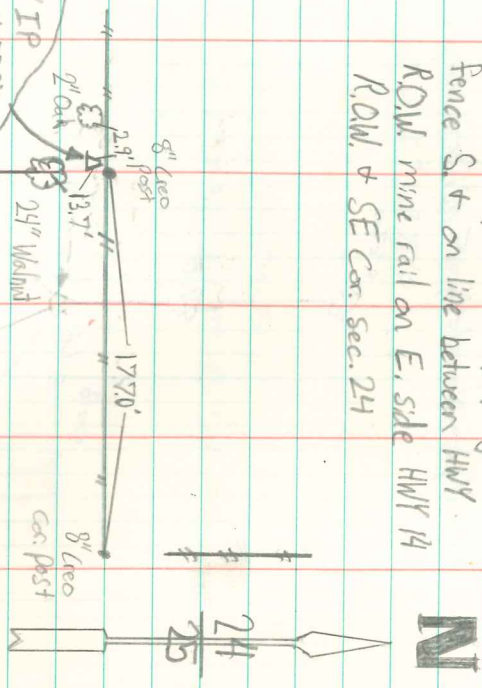


SW Cor. SE⁴ SE⁴ Sec. 24-75-20

Set in line w/ ancient property line
Fence S + on line between HWY
ROW. mine rail on E. side HWY 14
ROW + SE Cor. sec. 24



Set 5/8" IP
w/ cap # 5594
0.55' SW of 8" wood
post

7/31/00
Able Davis