



KAREN SCHWANEBECK, RECORDER
MARION COUNTY IOWA

Prepared by Abie C. Davis, P.E. & L.S., 1428 Oregon St., Knoxville, IA 50138 (641) 842-5863

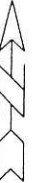
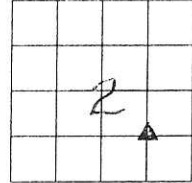
UNITED STATES PUBLIC LAND SURVEY CORNER CERTIFICATE
OF

Land survey Monuments situated in Section 2, Township 75N, Range 20W, of the Fifth Principal Meridian, Marion County, Iowa.

Previously recorded in BK 2, Pg 53 in County Recorders Office.

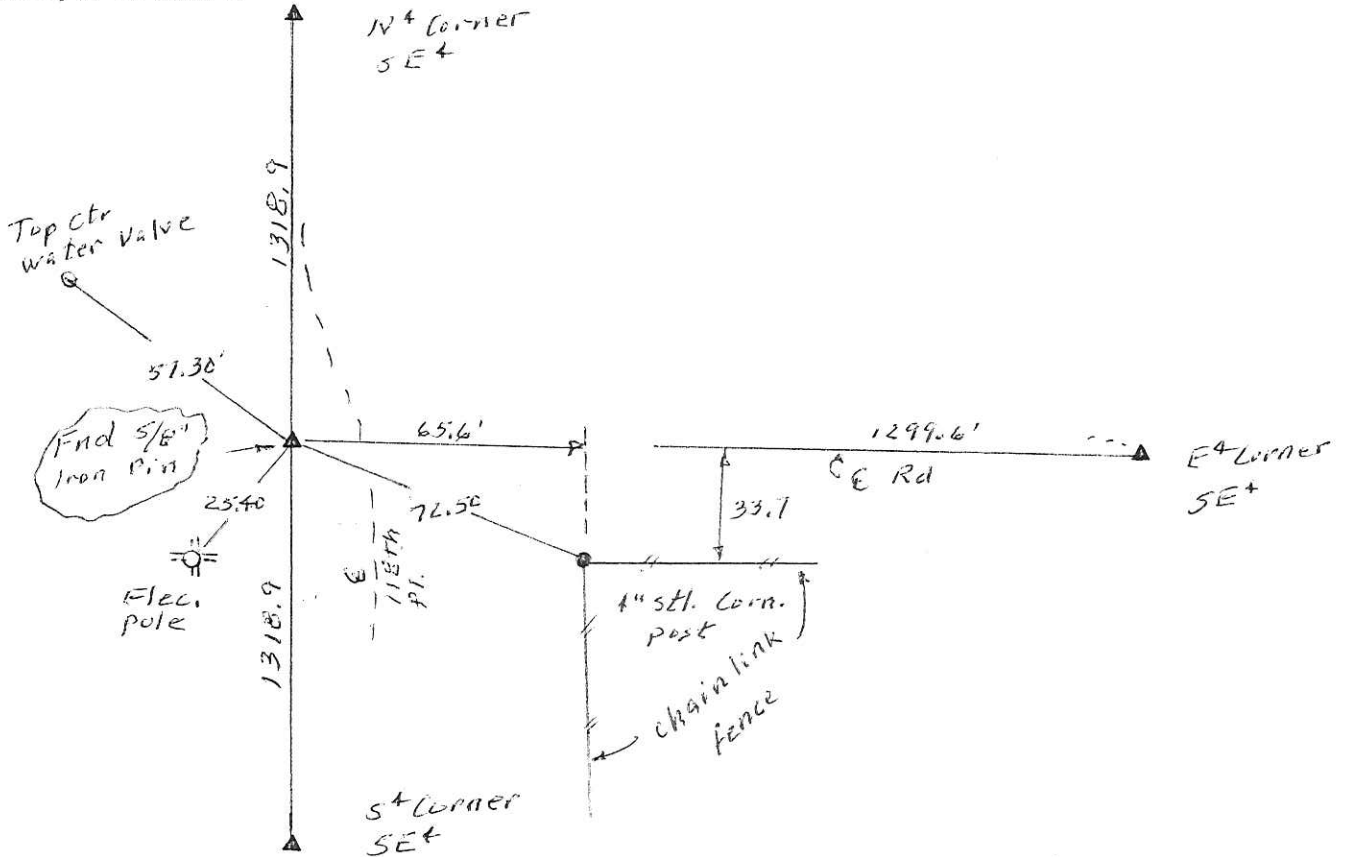
Show reason for preparing this certificate, the evidence and detailed procedures used in establishing the corner positions and monumentation found or placed

Monument Description and Remarks: Found 5/8" Iron Pin. Some ties had been changed due to construct of utilities. Set new ties and used some old ones undisturbed.



PLAN - VIEW

(Show a minimum of three reference ties to durable physical objects, relevant monuments and physical conditions that will enable recovery of the corner.)



I hereby certify that the survey work was completed and this land surveying document was prepared by me or under my direct personal supervision and that I am a duly licensed land surveyor under the laws of the state of Iowa

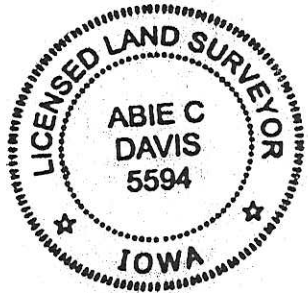
Signature: Abie C. Davis

Abie C. Davis, P.E. & L.S.

Date: 7/23/19 Reg. No. 5594

My license renewal date is December 31, 2019

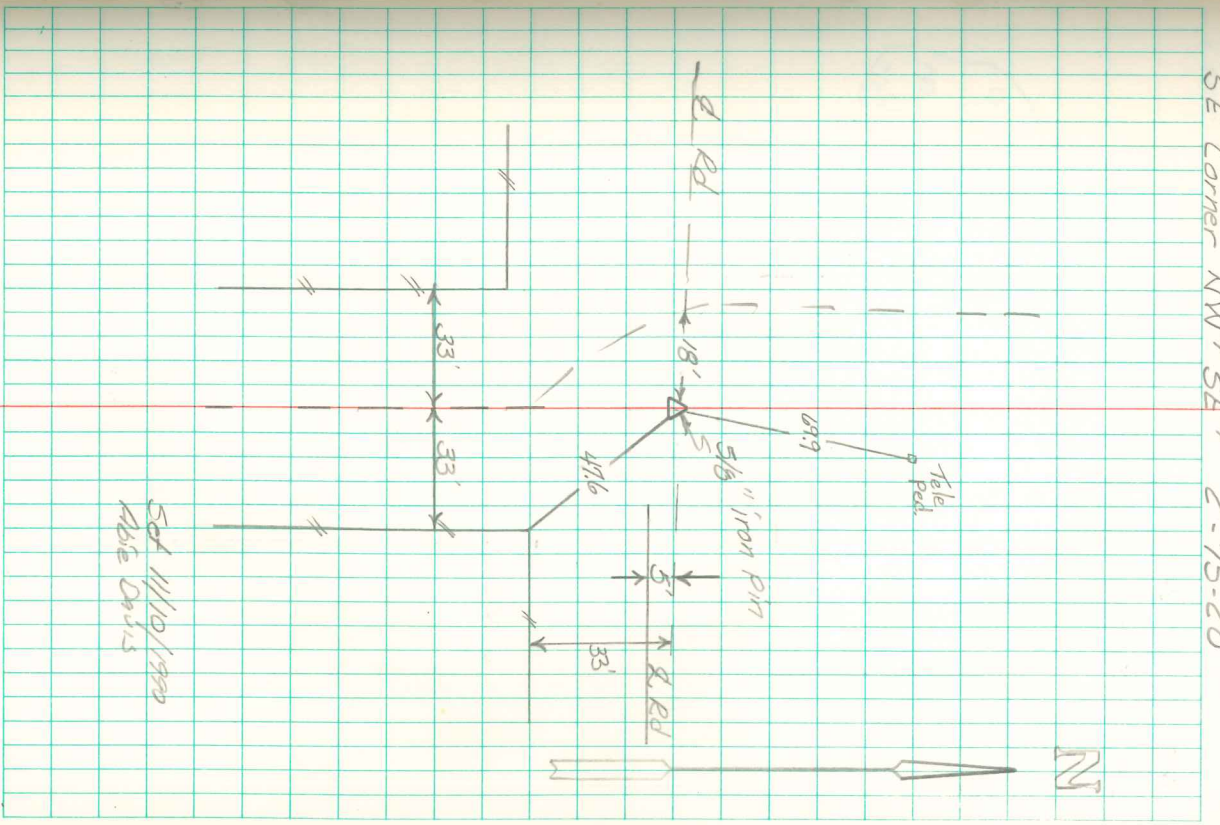
SEAL



List Corners to be Indexed			
Corners	Section	Twp	Range
SW Corn	2	75N	20W
NE+ SE+			

Pd \$1700 Cash - Ret Abie Davis

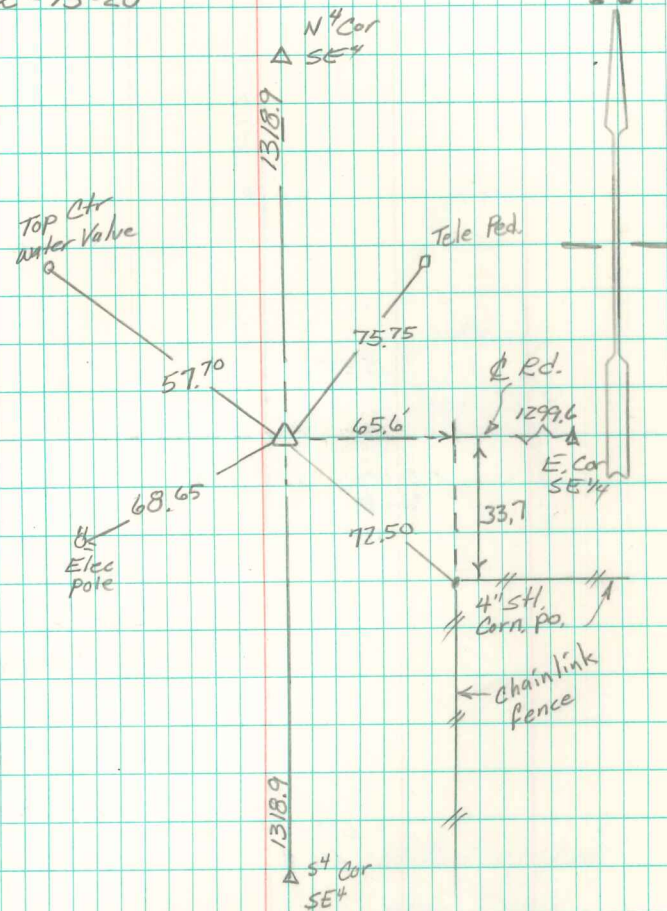
SE Corner NW⁴ SE⁴ 2-75-20



Sd 11/10/1990
Abe Davis

SW Corner NE⁴SE⁴

Sec. 2-75-20



Set at midpoint and online between
N⁴ Corner and S⁴ Corner of SE⁴

10/25/99 Abie Davis