

Prepared by: Abie C. Davis, P.E. & L.S., 1428 Oregon St., Knoxville, Iowa 50138 Phone: (515) 842-5863

UNITED STATES PUBLIC LAND SURVEY CORNER CERTIFICATE

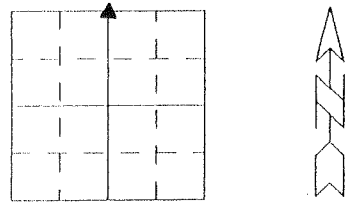
SLSI9-94

Land survey Monuments situated in Section 33, Township 75N, Range 20W, of the Fifth Principal Meridian, Marion County, Iowa.

Previously recorded in N/A in County Recorders Office.

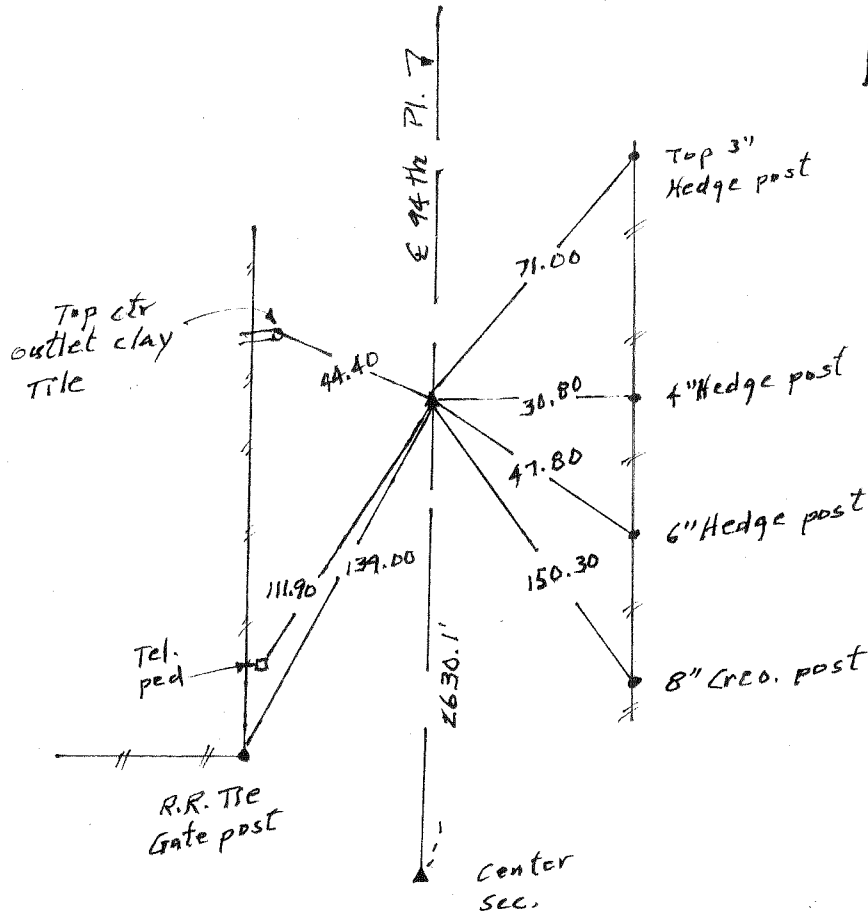
Show reason for preparing this certificate, the evidence and detailed procedures used in establishing the corner positions and monumentation found or placed

Monument Description and Remarks: Found Iron bolt
over C.M. set by county survey crew in 1956.
set out new ties



PLAN - VIEW

(Show a minimum of three reference ties to durable physical objects, relevant monuments and physical conditions that will enable recovery of the corner.)



N 4 Corner
Sec. 33-75-20

I hereby certify that the survey work was completed and this land surveying document was prepared by me or under my direct personal supervision and that I am a duly licensed land surveyor under the laws of the state of Iowa

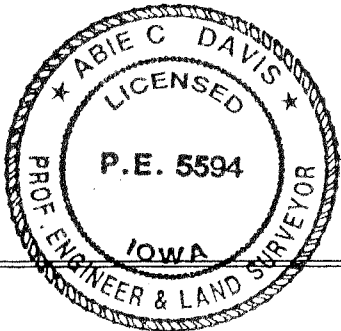
Signature: Abie C. Davis
 Abie C. Davis, P.E. & L.S.

Date: 5/13/13 Reg. No. 5594

My license renewal date is December 31, 2013

| List Corners to be Indexed | | | |
|----------------------------|---------|-----|-------|
| Corners | Section | Twp | Range |
| N 4 | 33 | 75N | 20W |

SEAL



Found Sandstone 18" x 10" x 8"
over 2-2" round tile.

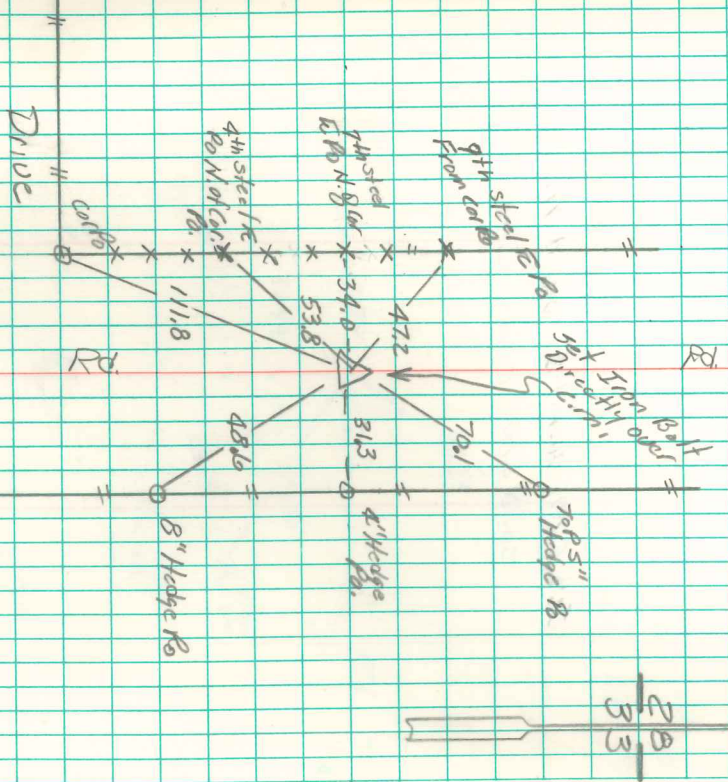
5ct c.m. over 1-2" round tile &
Placed Stone on top c.m.

N¹/₂ Cor. 33-75-20

Set - 8-21-41

Notes = Kennedy

Party: Wells, Glass,



C.M. Buried by Construction
Found 55ct 4x3' Hedge Stone
& Iron Bolt over C.M.