

UNITED STATES PUBLIC LAND SURVEY CORNER CERTIFICATE

SLS19-94

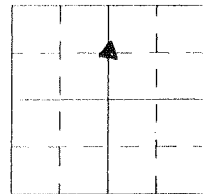
OF

Land survey Monuments situated in Section 36, Township 75N, Range 20W, of the Fifth Principal Meridian, Marion County, Iowa.

Previously recorded in N/A in County Recorders Office.

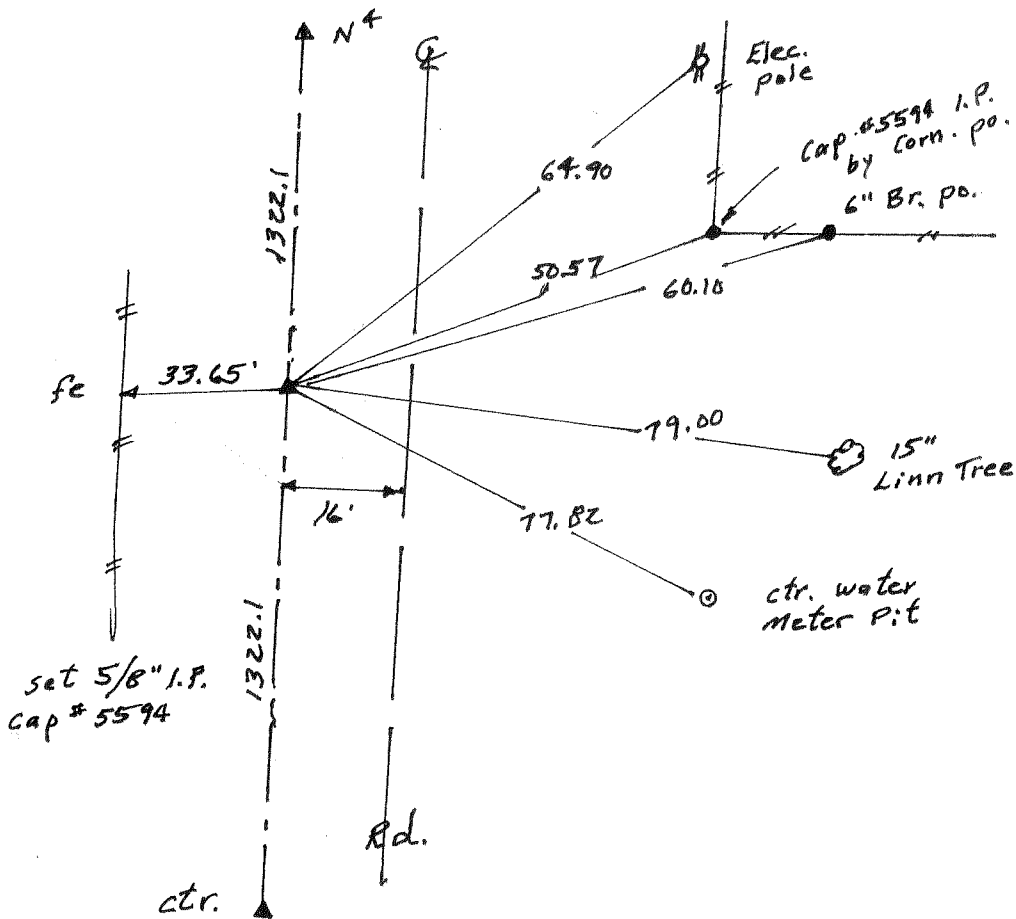
Show reason for preparing this certificate, the evidence and detailed procedures used in establishing the corner positions and monumentation found or placed

Monument Description and Remarks: Set corner on line and at the mid-point between the center and the N* Corner



PLAN - VIEW

(Show a minimum of three reference ties to durable physical objects, relevant monuments and physical conditions that will enable recovery of the corner.)



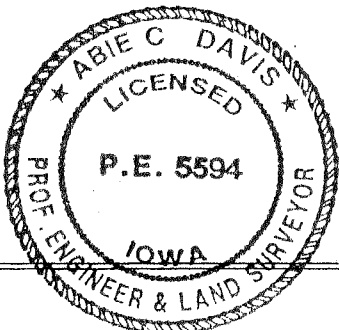
I hereby certify that the survey work was completed and this land surveying document was prepared by me or under my direct personal supervision and that I am a duly licensed land surveyor under the laws of the state of Iowa

Signature: Abie C. Davis
Abie C. Davis, P.E. & L.S.

Date: 8/2/13 Reg. No. 5594

My license renewal date is December 31, 2013

SEAL



List Corners to be Indexed

Corners	Section	Twp	Range
SW Corn. NW & NE 4	36	75N	20W