

Found Broken Otis

J.A. NEAL owner of land S.E.

at Cor. & resident on same 73 yrs,
stated his hired man, in setting
Cor. Post, dug into the tile set
by N.S. Watkins, & put the broken
pieces around the Post. these
broken pieces were found on west
side of Cor. Post & in line with
fences running N.S. & west.

Set man over 1-2" horse shoe tile
standing on ENO.

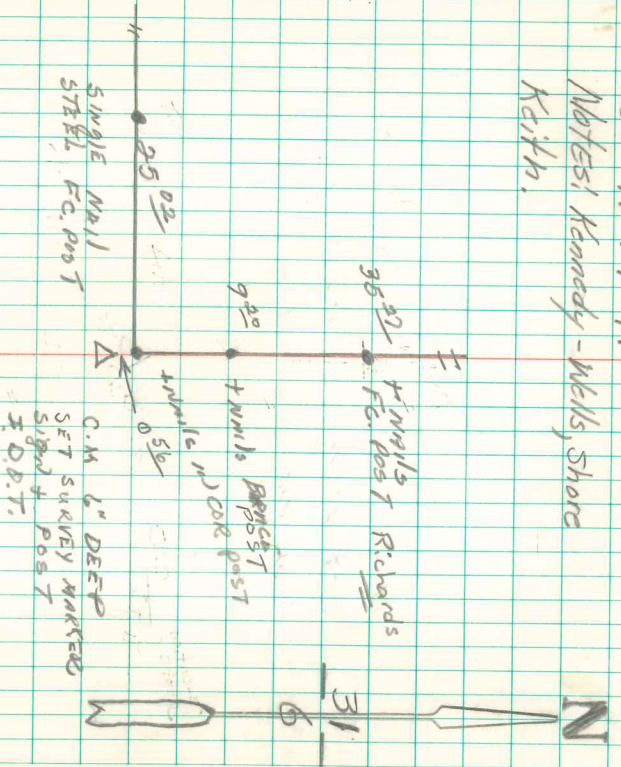
Put a sandstone 10" x 5" x 5" on top C.M.

- 44.4' E of X Nail in Twin Box Elder
- 4.0' N. " " " 4" "
- 50.0' S of witness stone
- 50.0' W. " " "
- 0.5' W. " 8" Hedge Cor Post

N. 1/4 Cor Sec 6 - 75-20

Set 11-14-41

Notes: Kennedy - Wells, Shore
Keith.



RETI'D 19 APR 1974
I.D.O.T.
4/14/2000 I.D.O.T.