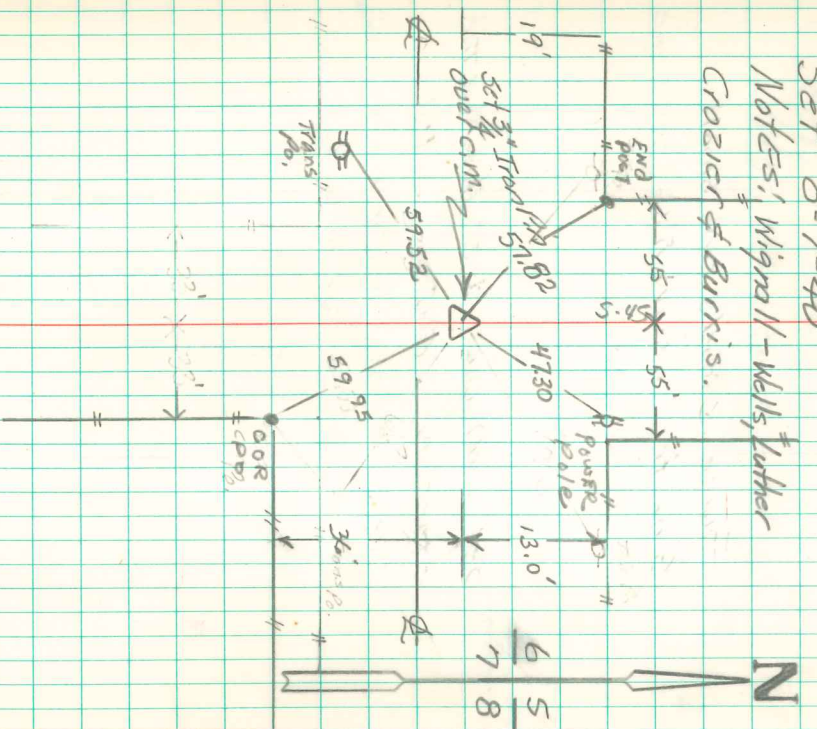


N.E. Cor section 7-75-20

Set 8-7-40

Notes: Wignall Wells, Luther Crozier & Burris.



Revised 4/8/92
Able DAVIS

4/14/2000 T.D.A.T.
Found 3/4" iron pin
Set County Engineer

Found sandstone 18"X10"X6"
and 8-3" Drain Tile

Set C.M. over 1-3" Drain Tile
stone on top C.M. 24" Below
Surface.