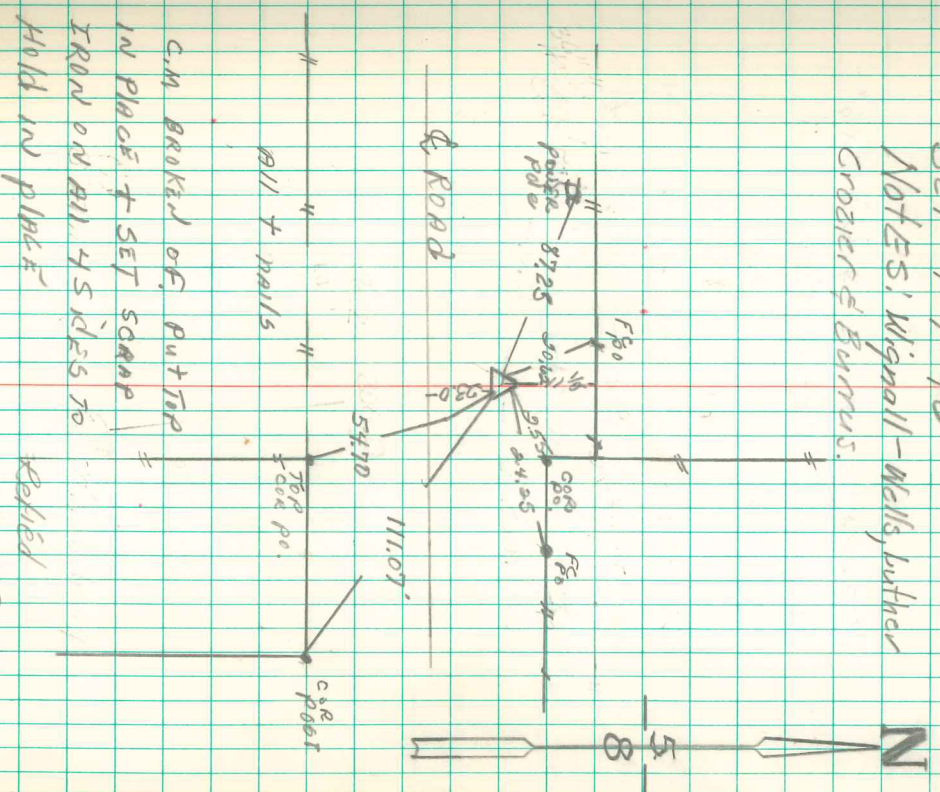


Found:

Set c.m. over sandstone and
1-3" Drain tile on top.

- 206.0' N. of 30" wild cherry
- 88.2' N.E. of 8" Elm.
- 77.0' E. " 36" Hackberry
- 15' South of Rd Fence N.S. Rd
- 2.0' S.W. " 15" oak Cor Rd

N¹/₄ Cor sec 8-75-20
 SET 7-7-40
 NOTES: Wignall - Wells, Luther
 Crozier & Barnes.



Replied
 27 July 93
 I.D.O.T.
 1/19/2000 I.D.O.T.