

Found 1-5" drain tile filled with concrete, rock, and broken pieces of 5" tile, over 4" drill hole filled with concrete and rock. Right where we set mon.

Set mon. over 1-2"  $\Delta$  tile standing on end top mon. 10" under surface, 5" tile on south side mon. at base. Put a white sand stone on top mon. Top stone 3" under surface

N.E. Cor. 16-75-21

Set: 5-14-41

Party: Kennedy

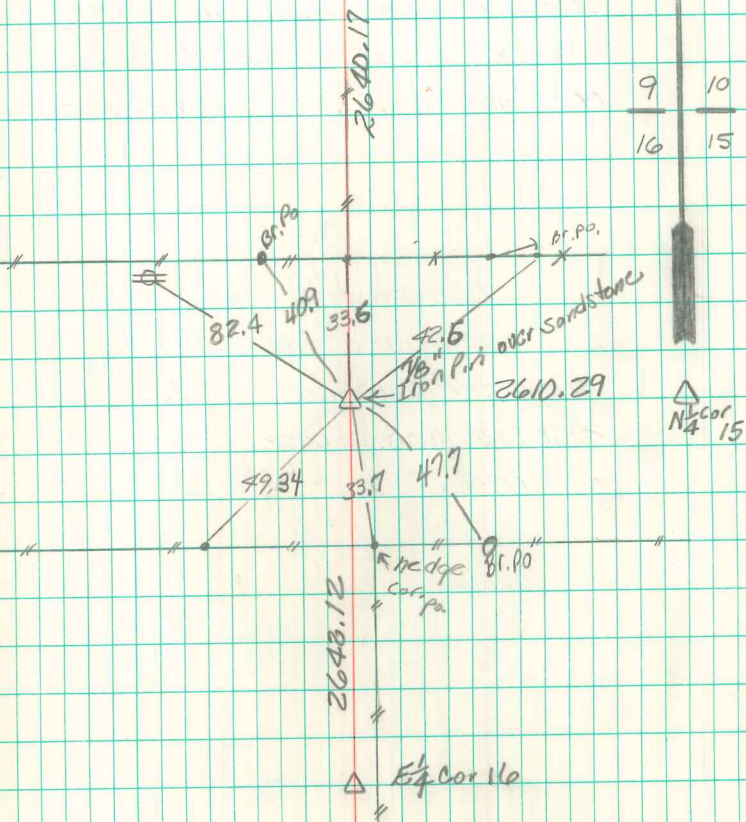
Luther

Notes: Kennedy

$\Delta$  E<sub>1</sub> Cor 9

N

9 10  
16 15



$\Delta$  N<sub>4</sub> Cor 15

$\Delta$  E<sub>1</sub> Cor 11a

Retied 10/16/03