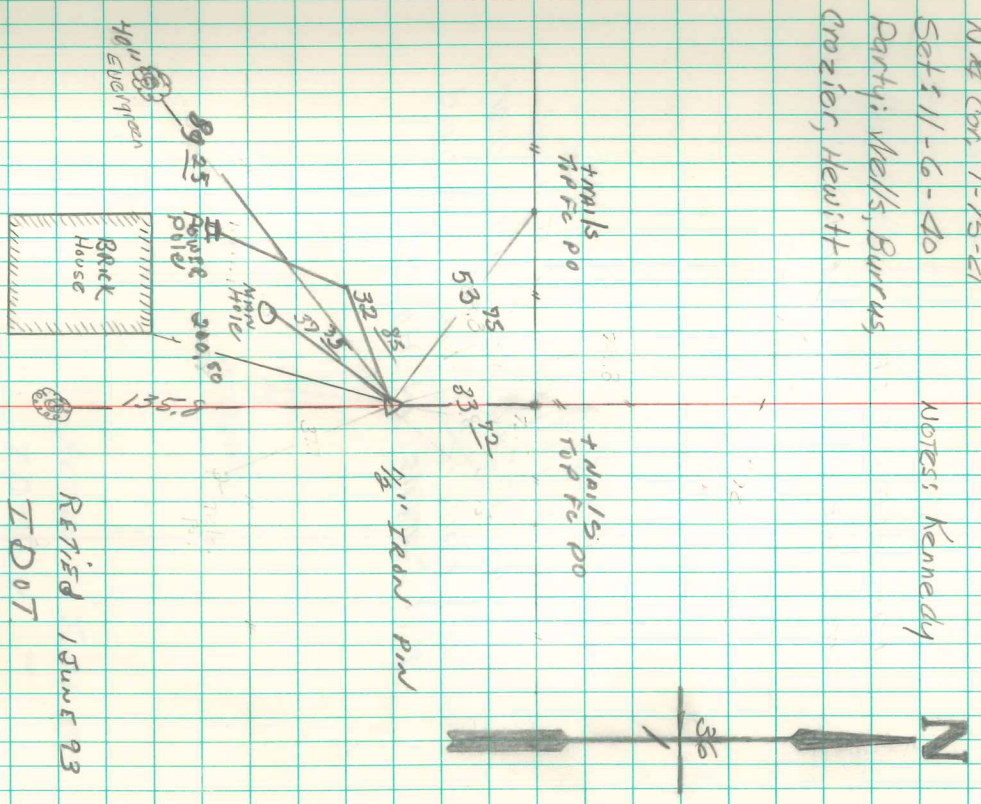


Found sand stone 8"-6"-3"
 over 2-2" A tile (Watkins tile)
 Right where we set Mon.

Set Mon. over 1-2" A Tile
 lowered in place. Stone
 on top Mon. top Mon. 1/2" under
 top surface.

N 1/4 Cor. 1-75-21
 Set 11-6-40
 Party: Wells, Burrus,
 Crozier, Hewitt

Notes: Kennedy



Found square 1/2" iron pin 5' deep in
 county rd using 20 engineers ties
 4/15/40 IDOT

RETIRED
 IDOT
 13 June 93