

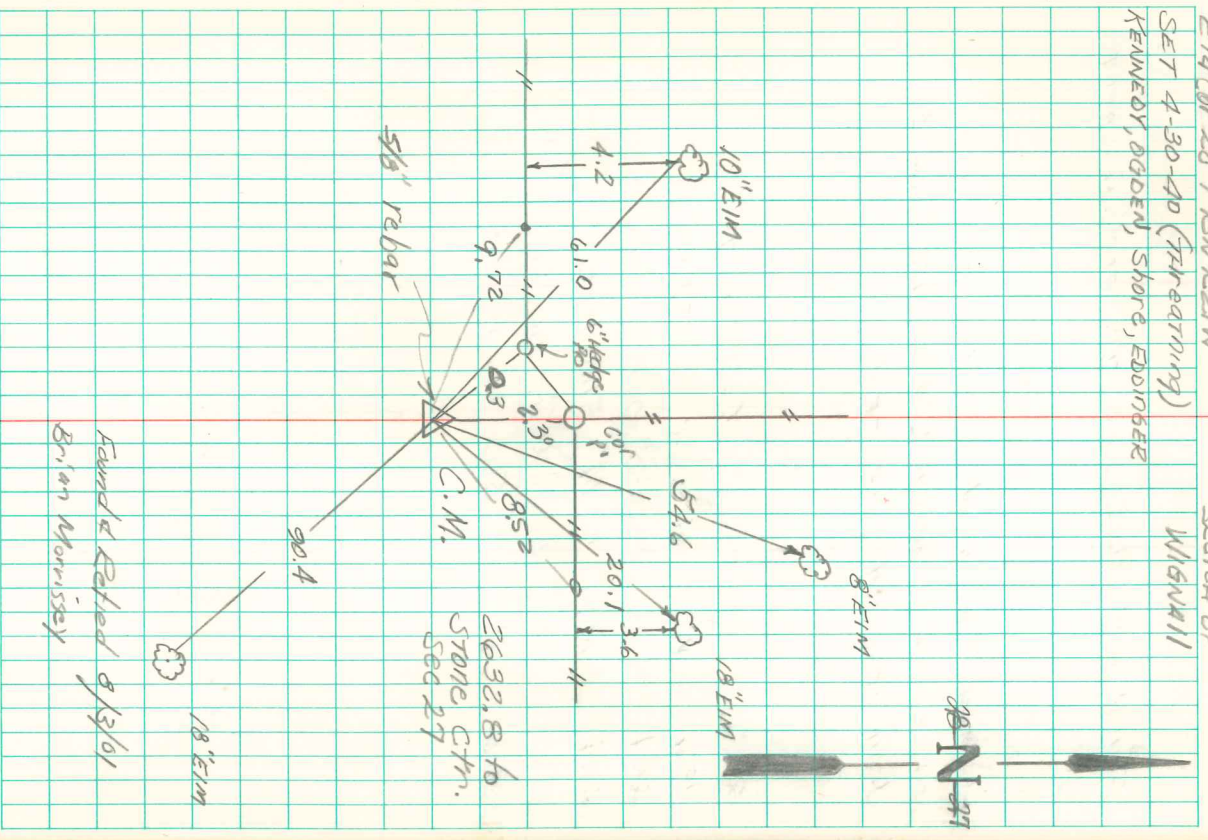
Found Sandstone 16" x 8" x 4" over 2-2 1/2" Round Tile

Set Concrete Monument and placed 1  
 Tile at base of C.M. on End. Put  
 Stone on top of C.M. Point above ground  
 2M 12" below Surface

- 61.0 SE of 10" Elm Tree 4.2N or 8'W E.
- 0.3 " " 6" Hedge or Post
- 54.6 SW " 8" Elm Tree
- 20.1 " " 18" " 3.6N of E 2'W E
- 90.4 NW " " " " " "

E14 of 28 795U E21W  
 SET 4-30-40 (Finishing)  
 KENNEDY, DODD, Shore, EDINGER

Sketch by  
 WISNALL



Found & Retired 8/3/01  
 Brian Morrissey