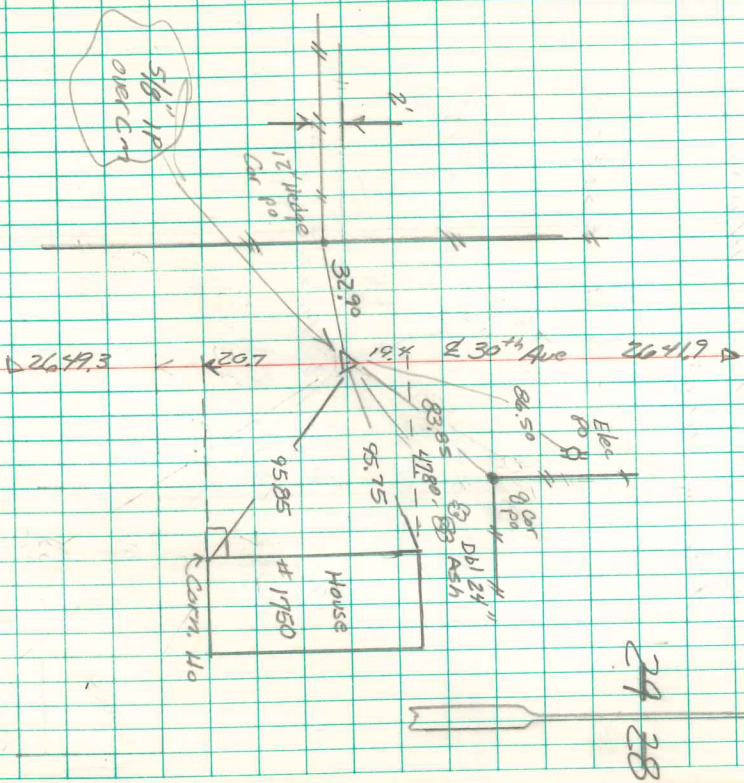


Found 10" x 12" x 6" Grant Rock
 over 2-2" round tile in
 Vert. Position
 Set C.M. over 2" Round tile
 Rock TOP C.M.

E 1/4 cor 29-75-21
 Sec 7 - No. - 25-1940
 Notes = Wells
 Parly - Burris, Harper



Found 5' Rock 4/18/02
 Able Davis