

Found 2" x 24" Gas Pipe over M. R. Rail

Lowered 1-2" A. Tile in Place

Set C.M. over Tile, at East side of M. R. Rail, Gas PPs on North side of C.M.

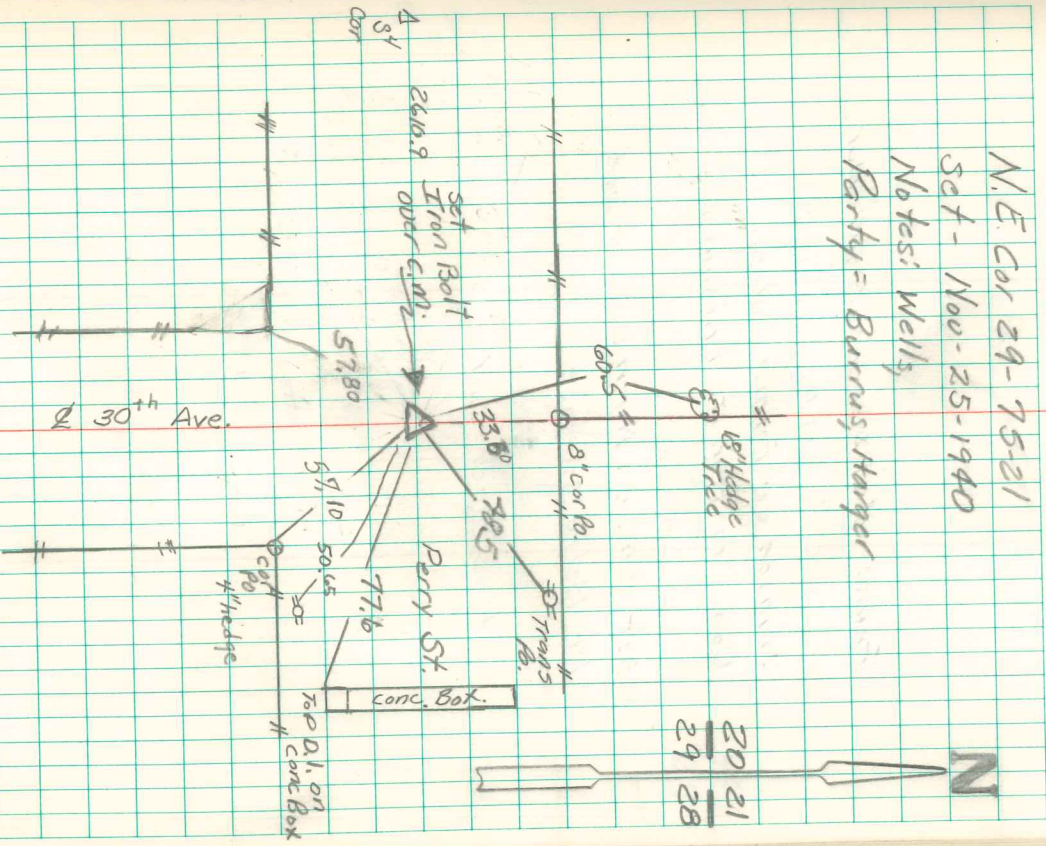
TOP C.M. 14" below Surface

N.E. Cor 29-75-21

Set - Nov-25-1940

Notes: Wells

Party = Burruss, Harp



Found & Retied 5/22/02
Abbie Davis