

Reestablished at mid Point on  
Line East & West.

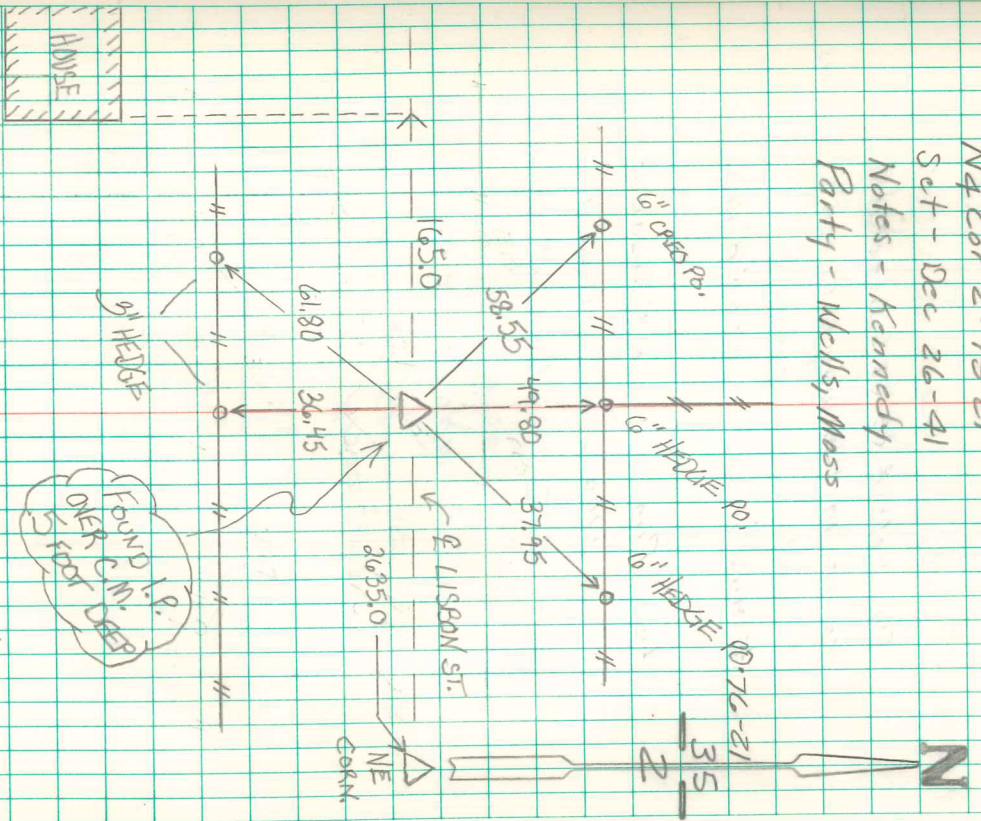
2642.0' West of N.E. Cor 3

Note: Bug hole 5' x 24' across  
Rd. as th's Point 15 in Deep  
Rd cut Probably Destroyed  
by Grader work.

2642.0' East of N.E. Cor 3

Set c.m. & Put Grant Rock  
12" x 12" x 8" on Top c.m.

NE Cor 2-75-21  
Set - Dec 26-41  
Notes - Kennedy  
Party - Wells, Moss



FOUND 1/2 RETIRED  
3/23/10  
ABIE C. DAVIS  
#5594