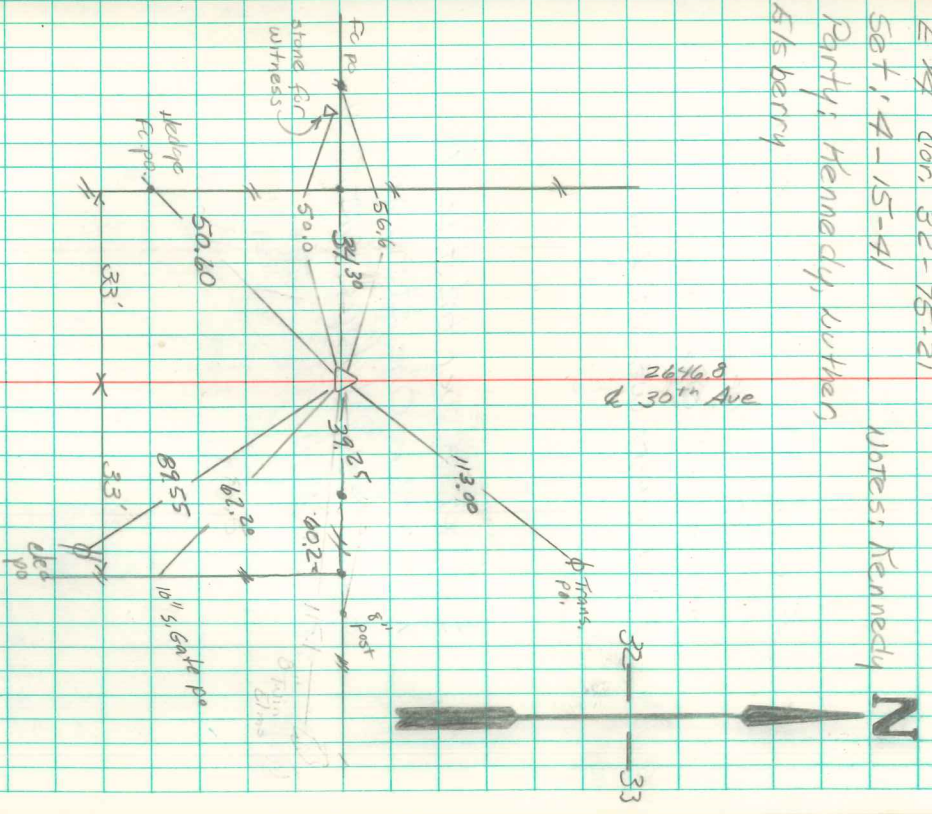


Dug 8'x8' in center of road, both on line with F's E and W and at mid point between Sec corners. Found no evidence of corner which nearby residences state was destroyed by road work. Re-established corner on line with old established and undisputed Div. fence lines running East and West and on line between Sec corners, N, S, E, W.

Set conc. mon. over 1-2' A tile standing on end, top mon. 11" under surface.

E 1/4 con. 32-75-21
Set 14-15-41
Partys: Kennedy, Luther
Kisberry

Notes: Kennedy



Found conc. mon. to "deep" set 5/8" iron pin w/cap on North side. Abbie Deary 3/25/65