

Instr. Number: 23-124
 BK: 2023 PG: 124
 Recorded: 1/10/2023 at 8:47:13.0 AM
 County Recording Fee: \$7.00
 Iowa E-Filing Fee: \$3.13
 Combined Fee: \$10.13
 Revenue Tax:
 NAOMI ELLIS, RECORDER
 Marion County, Iowa

RETURN TO: ross LAND SURVEYING, inc. PO Box 336 Johnston, Iowa 50131 515-254-2567

UNITED STATES PUBLIC LAND SURVEY CORNER CERTIFICATE OF

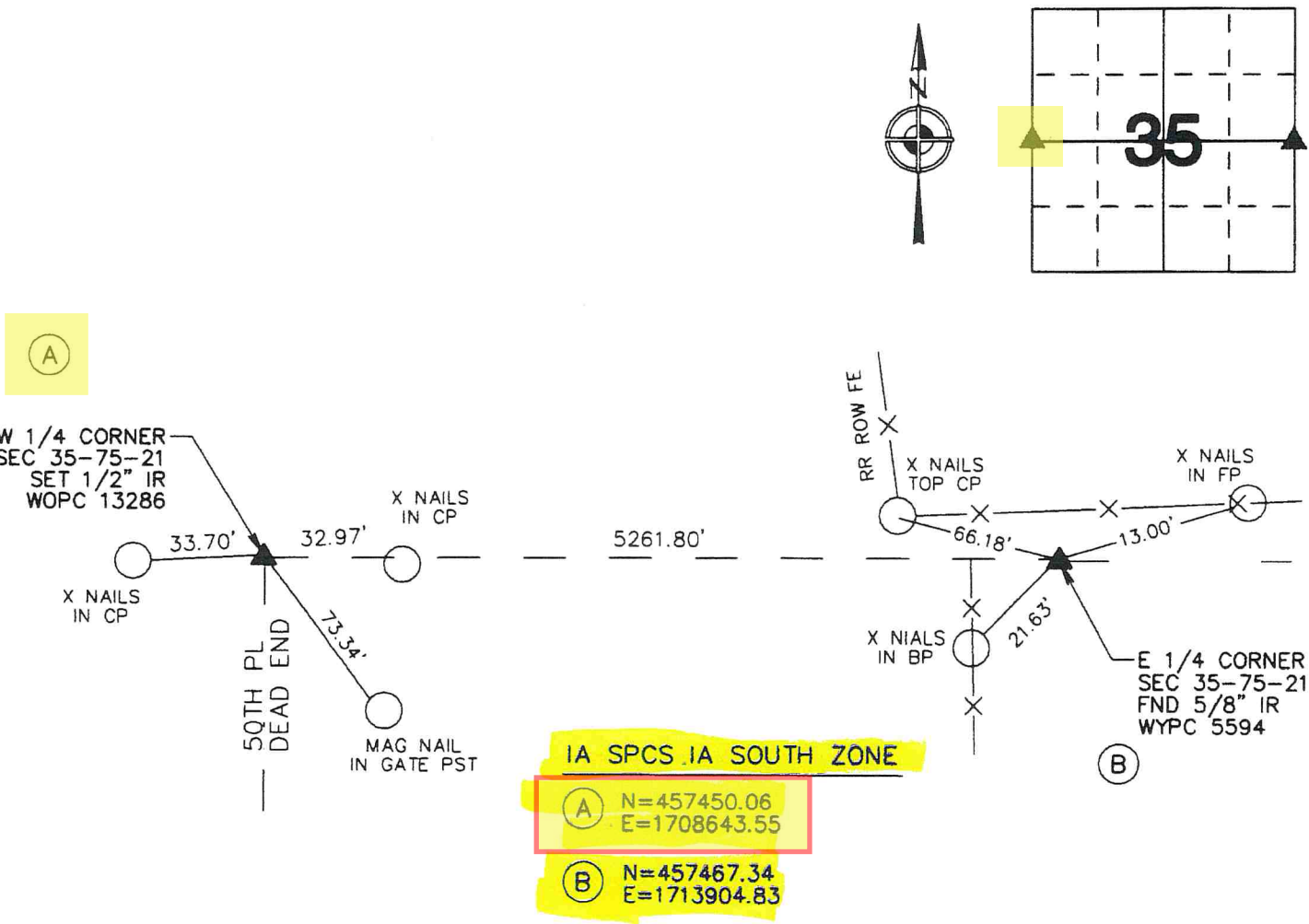
Land survey monuments situated in Section 35, Township 75, Range 21
 of the Fifth Principal Meridian, MARION County, Iowa. NO Certificate on record.

MONUMENT DESCRIPTION AND REMARKS:

SECTION CORNERS WERE USED TO ESTABLISH A NEW LAND DIVISION IN SAID SECTION 35

- A. WEST 1/4 COR OF SAID SECTION 35, ESTABLISHED FROM ENGINEERS OFFICE FIELD NOTE AND REMAINING TIES. CORNER HAD BEEN REMOVED. SET 1/2" IR WITH YELLOW PLASTIC CAP STAMPED PLS 13286.
- B. EAST 1/4 CORNER OF SAID SECTION 35, FOUND 5/8" IR WITH YELLOW PLASTIC CAP. USED EXISTING TIES AND REMEASURED

PLAN - VIEW



I HEREBY CERTIFY THAT THIS LAND SURVEYING DOCUMENT WAS PREPARED AND THE RELATED SURVEY WORK WAS PERFORMED BY ME OR UNDER MY DIRECT SUPERVISION AND THAT I AM A DULY LICENSED PROFESSIONAL LAND SURVEYOR UNDER THE LAWS OF THE STATE OF IOWA.

Signed: *[Signature]* Date: 1/9/23

GREGORY L. ROSS Iowa Reg. No. 13286
 My license renewal date is December 31, 2024

CORNER TO BE INDEXED			
Corner	Sec	Twp.	Range
W 1/4	35	75	21
E 1/4	35	75	21

JOB # 7982

Found 1-2" Horseshoe tile and fragments
of another. No stone

Lowered Tile in place and set G.M. place
pieces of other tile and pieces of 3"
drain tile at base of G.M.

Top of G.M. 12" below surface

25.7	SE of 10" Cedar Post
19.6	West of Post E. E. N.E.S.
23.4	" " 30" Oak
21.4	N.W. " 14" Elm Tree
118.0	" " N.W. Cor of House
128.3	" " SW " " "

E/4 Cor 34 T75N R21W Sketch by
SET 5-1-40 (Snow Flurries) WIGNALL
KENNEDY, OGDEN, Shore, Edlinfer

