

KAREN SCHWANEBECK, RECORDER  
MARION COUNTY IOWA

Prepared by: Abie C. Davis, P.E. & L.S., 1428 Oregon St., Knoxville, Iowa 50138 Phone: (515) 842-5863

# UNITED STATES PUBLIC LAND SURVEY CORNER CERTIFICATE

SLS19-94

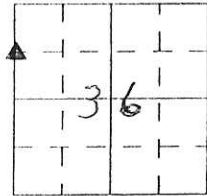
## OF

Land survey Monuments situated in Section 36, Township 75N, Range 21W, of the Fifth Principal Meridian, Marion County, Iowa.

Previously recorded in N/A in County Recorders Office.

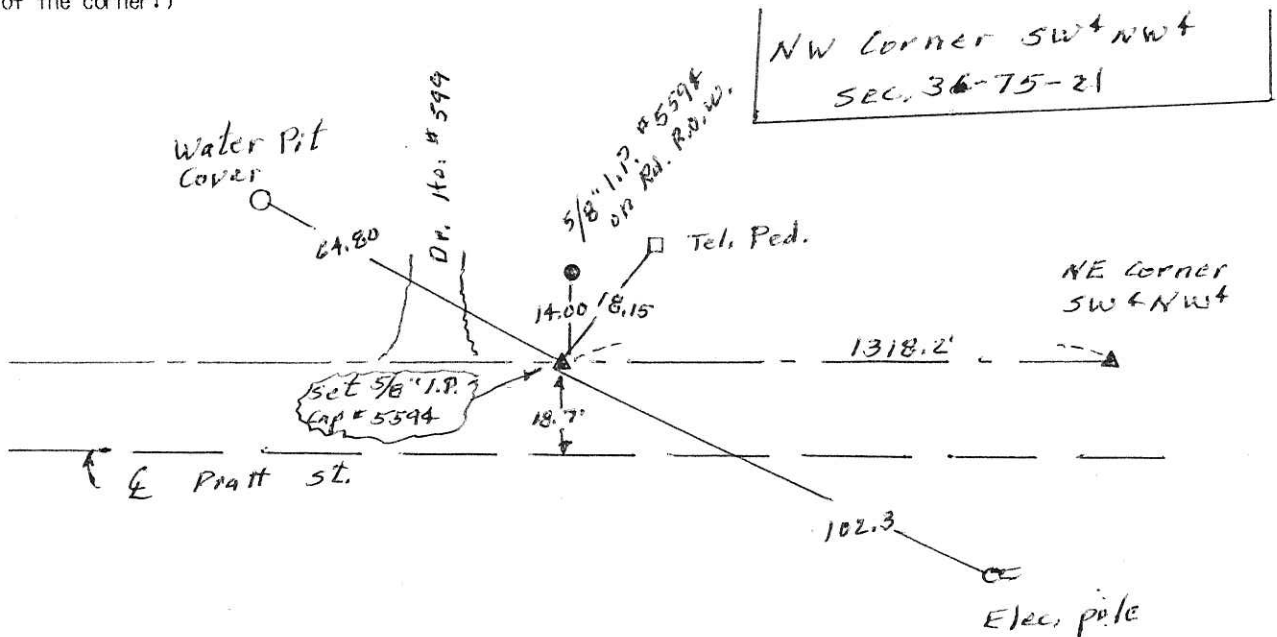
Show reason for preparing this certificate, the evidence and detailed procedures used in establishing the corner positions and monumentation found or placed

Monument Description and Remarks: Orig. Iron Pin  
destroyed by Telephone utility work. set  
5/8" Iron Pin from old ties.



### PLAN - VIEW

(Show a minimum of three reference ties to durable physical objects, relevant monuments and physical conditions that will enable recovery of the corner.)



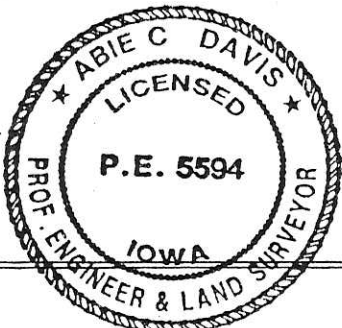
I hereby certify that the survey work was completed and this land surveying document was prepared by me or under my direct personal supervision and that I am a duly licensed land surveyor under the laws of the state of Iowa

Signature: Abie C Davis  
Abie C. Davis, P.E. & L.S.

Date: 8/24/16 Reg. No. 5594

My license renewal date is December 31, 2017

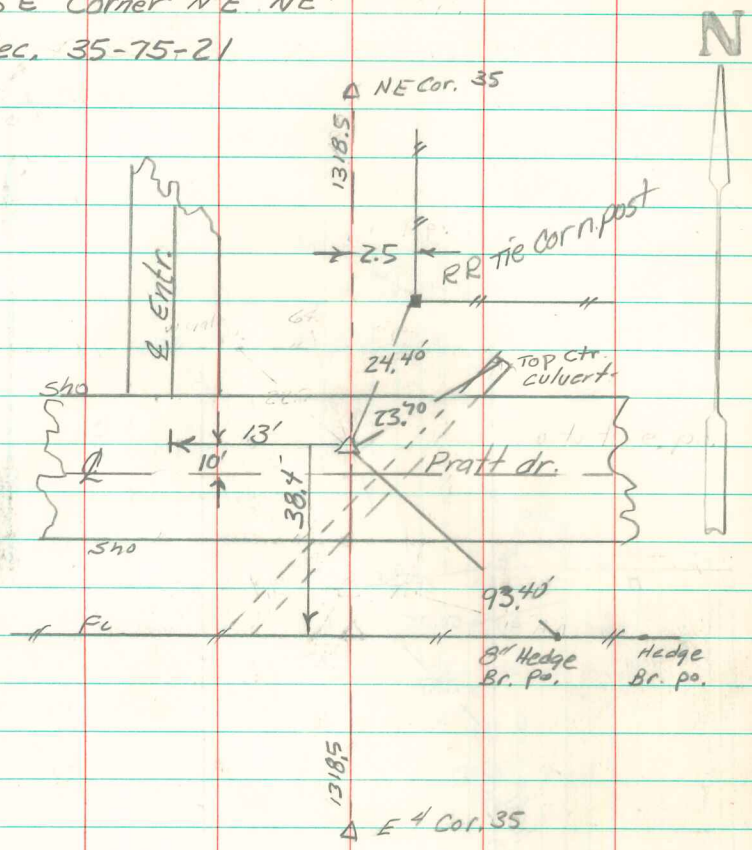
SEAL



List Corners to be Indexed			
Corners	Section	Twp	Range
NW Cora	36	75N	21W
SW & NW 4			

Pd \$700 cash - Ret Abie Davis

SE Corner NE<sup>4</sup>NE<sup>4</sup>  
Sec. 35-75-21



set 5/8" iron pin  
w/cap # 5594  
Abie Davis 3/13/00