

Prepared by Abie C. Davis, P.E. & L.S., 1428 Oregon St., Knoxville, IA 50138 (641) 842-5863

UNITED STATES PUBLIC LAND SURVEY CORNER CERTIFICATE

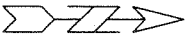
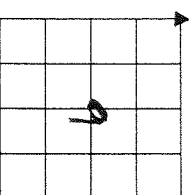
OF

Land survey Monuments situated in Section 9 Township 75 N Range 21 W of the Fifth Principal Meridian, Marion County, Iowa.

Previously recorded in N/A (book, page, document number, etc.) in County Recorder's Office.

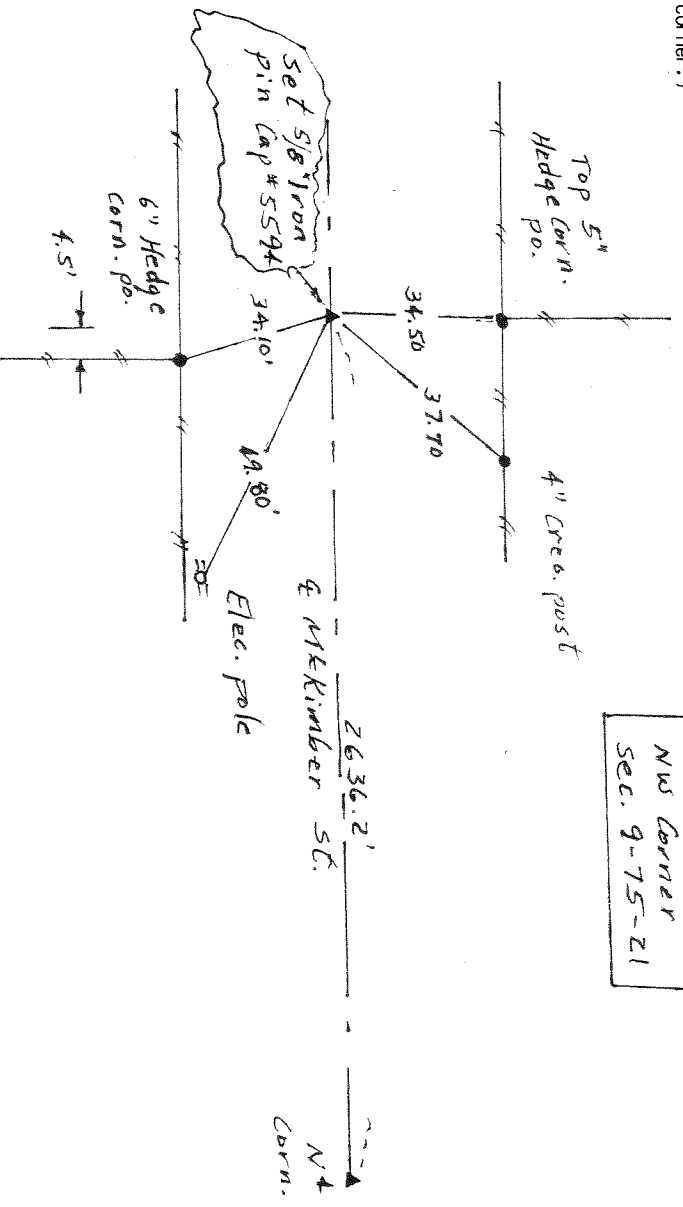
Show reason for preparing this certificate, the evidences and detailed procedures used in establishing the corner positions and monumentation found or placed

Monument Description and Remarks: orig. corner set in 1941 was not found set corner at mid-point between R.D.W. fences and 2636.2 ft west of NW corner per dist. from old ties for SW corner SW + Sec. 4-75-21 in Co. Engr. Tie book



PLAN - VIEW

(Show a minimum of three reference ties to durable physical objects, relevant monuments and physical conditions that will enable recovery of the corner.)



NW Corner
Sec. 9-75-21

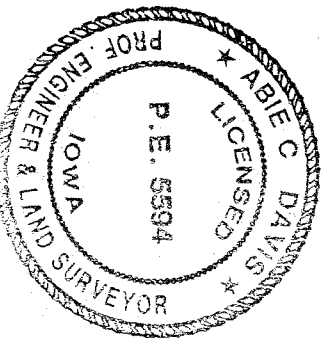
I hereby certify that the survey work was completed and this land surveying document was prepared by me or under my direct personal supervision and that I am a duly licensed land surveyor under the laws of the state of Iowa

Signature: Abie C. Davis

Date: 4/10/13

My license renewal date is December 31, 2013

List Corners to be Indexed
Corners Section Twp Range
NW 9 75 N 21 W



SEAL

Found granit rock over 1-3"
 drain tile filled with rock
 concrete, over a piece of 2"
 A tile 6" long.
 Right where we set mon.

Set mon. over the pieces of
 A tile lowered in place. Top
 mon 12" under surface. 3" tile
 on north side mon. rock on top
 lying flat way.

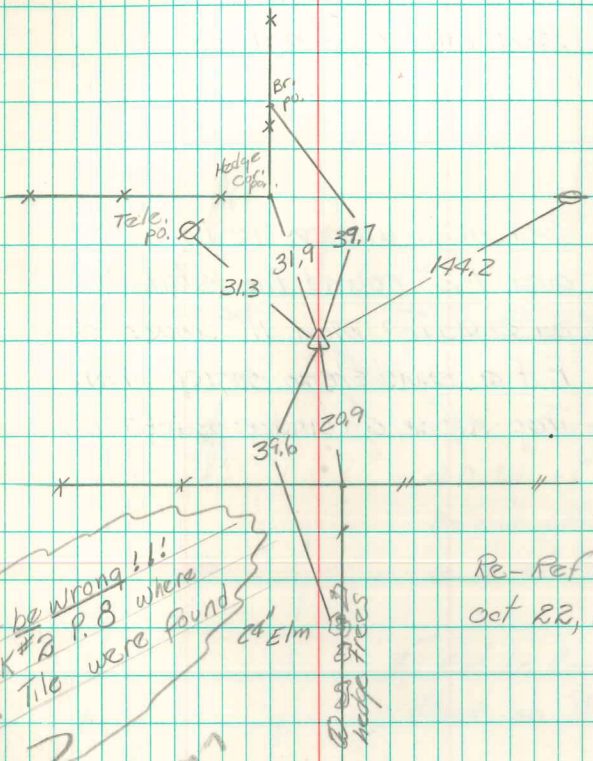
ORIGINAL CORNER SET NOT FOUND.
 RESET BY ABIE DAVIS, 2013
 GOTO BOOK #2 P. 32 FOR
 NEW RECORD.

N.E. Cor. 8-75-21

Set: 5-13-41

Notes: Kennedy

Party: Kennedy, Luther,
 Salberry



5	4
8	9

Might be wrong!!
 see BK #2 P. 8 where
 Watkins Tile were found
 Mall Corner

Re-Ref'd
 Oct 22, 1945

Found granite rock over 1-3"
 drain tile filled with rock
 concrete, over a piece of 2"
 A tile 6" long,
 Right where we set Mon.

Set mon. over the pieces of
 a tile lowered in place. Top
 mon 12" under surface. 3" tile
 on north side mon rock on top
 lying flat way.

N.E. cor 8-75-21
 Set: 5-13-41
 Party: Kennedy, Kutter,
 Sabbery

Notes: Kennedy

