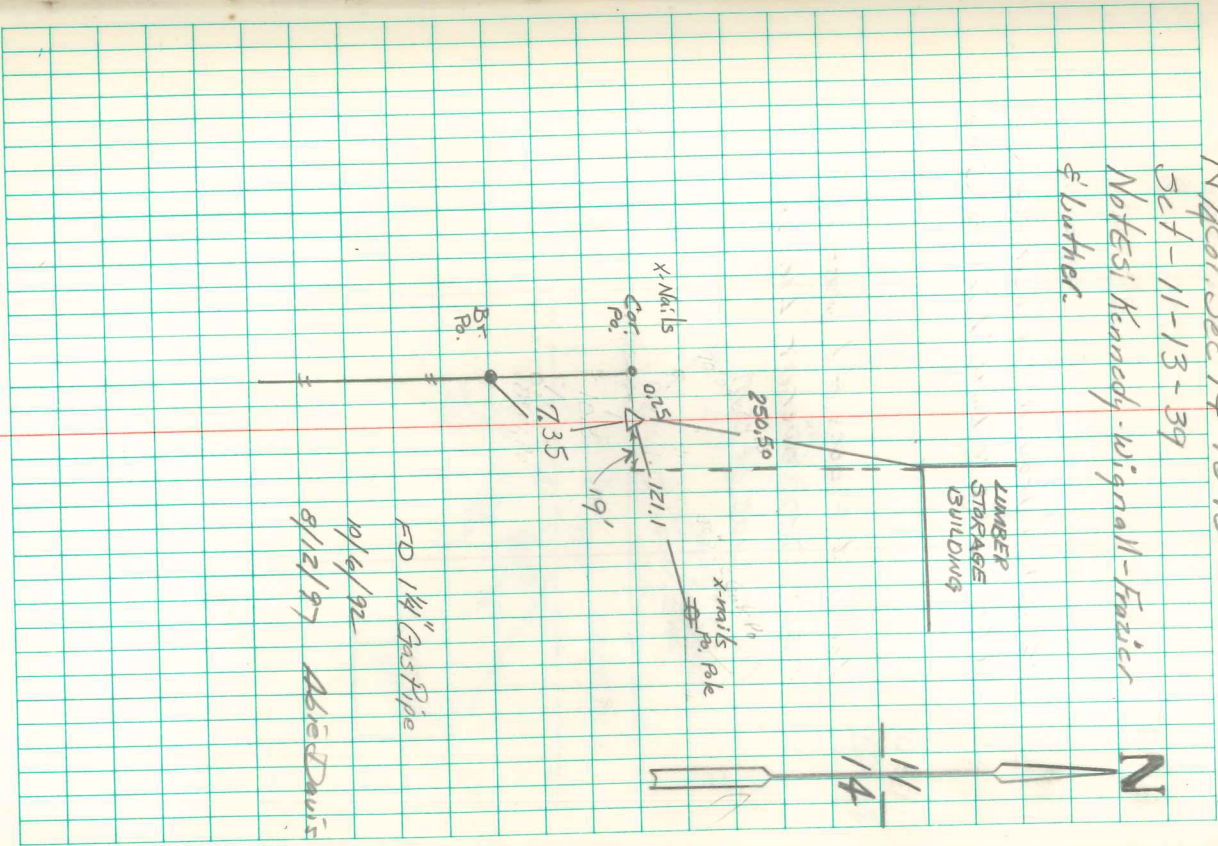


Found Limestone 5'x3'x2"
 over 1-3" Broken Tile 6" long
 Set cm. over tile horiz.
 Stone on south side cm.

N 1/4 Cor. Sec 14-76-18
 Set - 11-13-39
 Notes: Kennedy - Wignall - Foster
 & Luther.



FD 1 1/4" Gas Pipe
 10/4/92
 8/12/97
 Albert Davis