

UNITED STATES PUBLIC LAND SURVEY CORNER CERTIFICATE

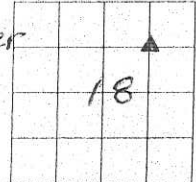
OF

Land survey Monuments situated in Section 18, Township 76N, Range 18W, of the Fifth Principal Meridian, Marion County, Iowa.

Previously recorded in N/A in County Recorders Office.

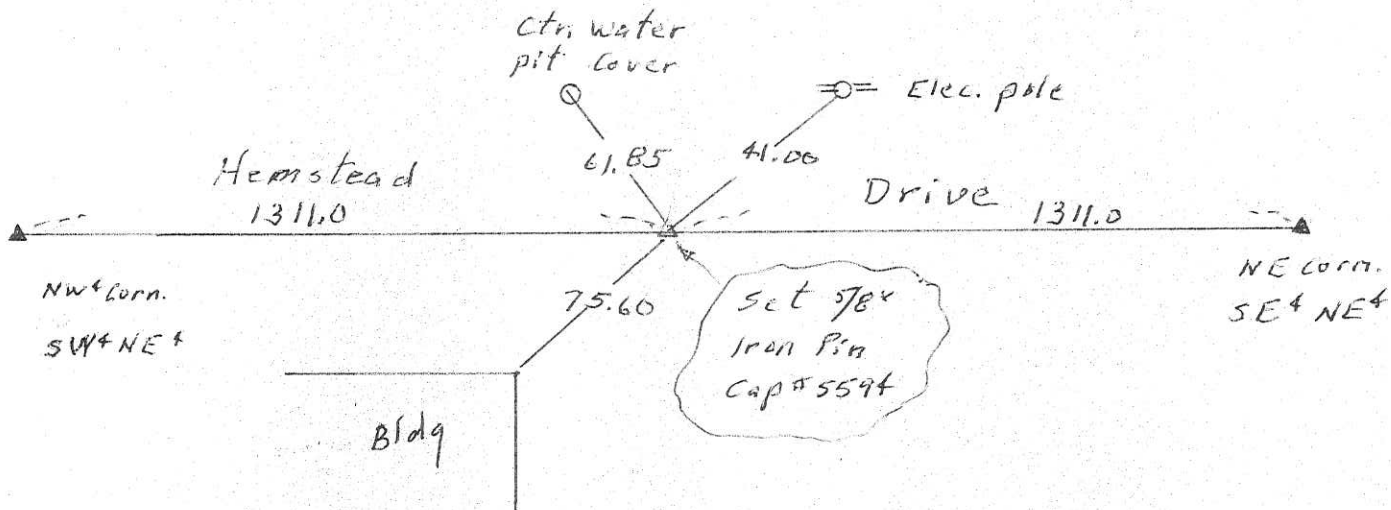
Show reason for preparing this certificate, the evidence and detailed procedures used in establishing the corner positions and monumentation found or placed.

Monument Description and Remarks: set corner at mid-point & on line between the NW corner SW⁴ NE⁴ and the NE corner of the SE⁴ NE⁴ sec. 18-76-18



PLAN - VIEW

(Show a minimum of three reference ties to durable physical objects, relevant monuments and physical conditions that will enable recovery of the corner.)



I hereby certify that the survey work was completed and this land surveying document was prepared by me or under my direct personal supervision and that I am a duly licensed land surveyor under the laws of the state of Iowa

Signature: Abie C. Davis

Date: 4/18/19 Abie C. Davis, P.E. & L.S. Reg. No. 5594

My license renewal date is December 31, 2019

SEAL



List Corners to be Indexed

Corners	Section	Twp	Range
---------	---------	-----	-------

NE Corn	18	76N	18W
SW ⁴ NE ⁴			