

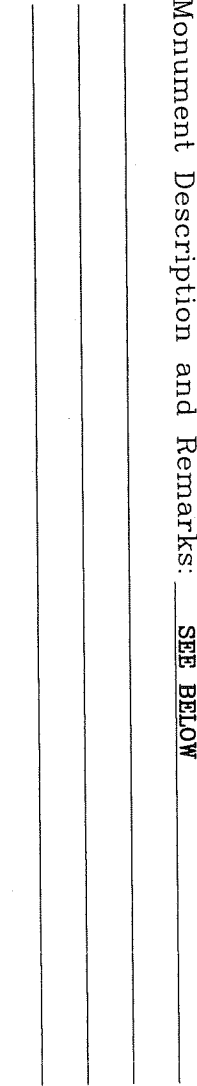
KAREN SCHWANEBECK, RECORDER  
 MARION COUNTY IOWA

**GARDEN & ASSOC.** P.O. Box 451, Oskaloosa, Iowa 52577-0451 Phone: (641)672-2526

**UNITED STATES PUBLIC LAND SURVEY CORNER CERTIFICATE**

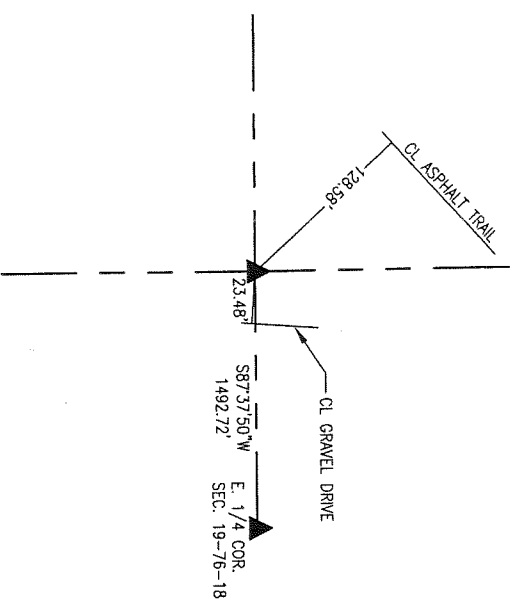
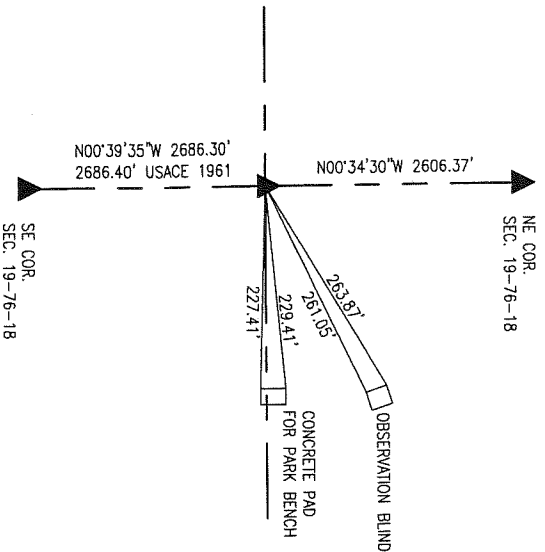
OF

Land Survey Monuments situated in Section 19, Township 76, Range 18,  
 of the Fifth Principal Meridian, MARION County, Iowa.  
 Previously recorded in NO CERTIFICATE OF RECORD in County Recorder's Office.  
 Monument Description and Remarks: SEE BELOW



EAST 1/4 CORNER

NW CORNER EAST 6 1/2  
 ACRES OF GOV'T LOT 3



OCTOBER 12, 2013  
 FOUND WP, A CONC. MON. 18" DEEP. FOUND 6"x8"x8"  
 TRIANGULAR LIMESTONE 1" DEEP ON SOUTH SIDE OF CONC.  
 MON. CONC. MON. WAS LOCATED USING INFORMATION FOUND  
 IN USACE FIELDBOOK NRR-196 PAGE 28 REFERENCING THE  
 E 1/4 CORNER FROM THE SE CORNER OF SECTION 19 AND  
 A NEARBY TRACT CORNER.  
 SET 5/8" X 30" REBAR WITH YELLOW PLASTIC CAP NO.  
 14416 ON EAST AND WEST SIDES OF CONC. MON.

OCTOBER 12, 2013  
 NW CORNER OF EAST 6 1/2 ACRES OF GOV'T LOT 3  
 FOUND 8"x9"x18" POINTED SANDSTONE EXPOSED 4" STONE  
 IS RECORDED IN IRREGULAR SURVEY BOOK 3 PAGE 123.  
 STONE WAS LOCATED USING INFORMATION FOUND IN USACE  
 FIELDBOOK NRR-196 PAGE 29 REFERENCING THE E 1/4  
 CORNER TO SAID NW CORNER.  
 SET 5/8" X 30" REBAR WITH YELLOW PLASTIC CAP NO.  
 14416 ON NORTH SIDE OF STONE. STONE IS MARKED BY A  
 STEEL POST AND 2" PVC SLEEVE OVER POST.

I hereby certify that this land surveying document was prepared  
 and the related survey work was performed by me or under my  
 direct personal supervision and that I am a duly licensed  
 Professional Land Surveyor under the laws of the State of Iowa.

*Randal J. Nugteren*  
 Randal J. Nugteren, P.L.S.  
 License number: 14416  
 My license renewal date is December 31, 2014

Date

SEAL



List Corners to be Indexed	Section	Township	Range
Corners	19	76	18
E. 1/4 COR.	19	76	18
NW CORNER EAST 6 1/2 ACRES OF GOV'T LOT 3	19	76	18

Found 2-2" O tile the top  
 Tile had a Piece broken off it.  
 Right where we set C.M.

Set C.M. over both tile  
 Lowered in Place.  
 Top C.M. 13" under Surface  
 " Rock 6" " "

